

MINNESOTA DEPARTMENT OF TRANSPORTATION LYON COUNTY

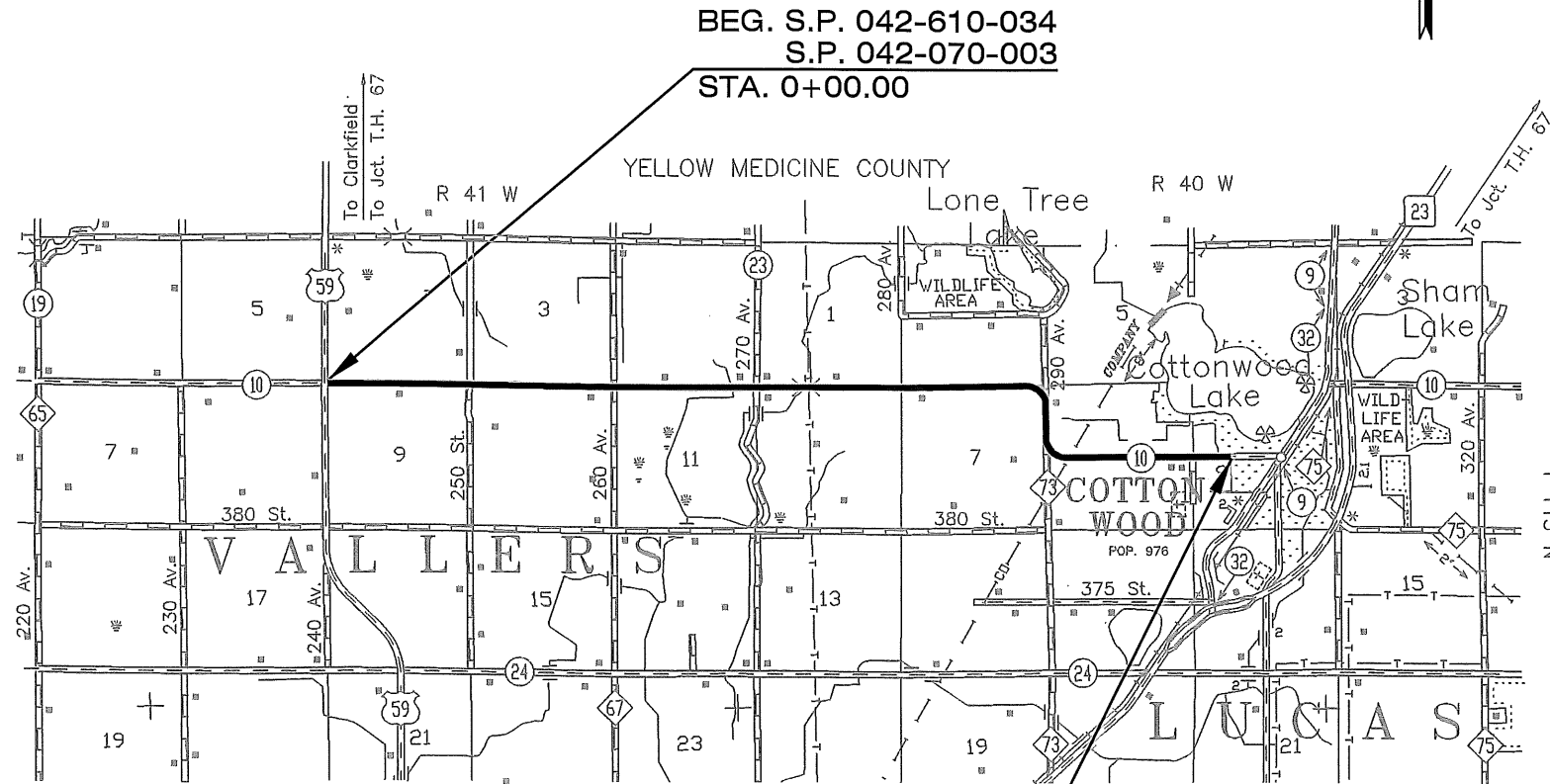
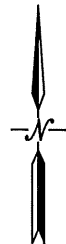
CONSTRUCTION PLAN FOR: AGGREGATE SURFACING, AGGREGATE SHOULDERING & CONCRETE SURFACING.

LOCATED ON: C.S.A.H 10 BETWEEN: U.S. 59 (6.5 MILES WEST OF COTTONWOOD) AND WEST 5th STREET
FROM: NW COR. SEC. 9 T113N-R41W TO: THE WEST CITY LIMITS OF COTTONWOOD IN
SEC. 9 T113N-R40W

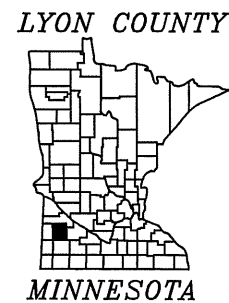
(Geographical Description)
(Legal Description)

STATE PROJECT NO. : 042-610-034
042-070-003

GROSS LENGTH: 35189.00 FEET 6.665 MILES
BRIDGES-LENGTH: FEET MILES
EXCEPTIONS-LENGTH: FEET MILES
NET LENGTH: 35189.00 FEET 6.665 MILES



END S.P. 042-610-034
S.P. 042-070-003
STA. 351+89.00



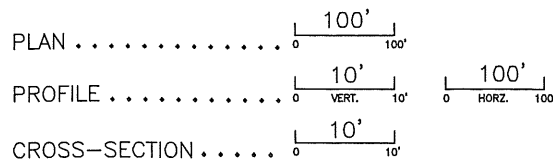
PLAN SYMBOLS

STATE LINE
COUNTY LINE
TOWNSHIP OR RANGE LINE
SECTION LINE
QUARTER LINE
SIXTEENTH LINE
RIGHT OF WAY LINE
SLOPE EASEMENT
PRESENT RIGHT OF WAY LINE
CONTROL OF ACCESS LINE
PROPERTY LINES
VACATED PLATTED PROPERTY
CORPORATE HIGHWAY CENTER LINE
TRUNK HIGHWAY CENTER LINE
RETAINING WALL
RAILROAD
RAILROAD RIGHT OF WAY LINE
RIVER OR CREEK
DRY RUN
DRAINAGE DITCH
DRAIN TILE
CULVERT
DROP INLET
RAILROAD CROSSING SIGN
RAILROAD CROSSING BELL
ELECTRIC WARNING SIGN
CROSSING GATE
MEANDER CORNER
SPRINGS
MARSH
TIMBER
ORCHARD
BRUSH
NURSERY
CATCH BASIN
FIRE HYDRANT
CATTLE GUARD
OVERPASS (HIGHWAY OVER)
UNDERPASS (HIGHWAY UNDER)
BRIDGE
BUILDING (ONE STORY FRAME)
F - FRAME
S - STONE
B - BRICK
C - CONCRETE
T - TILE
ST - STUCCO
IRON PIPE OR ROD
MONUMENT (STONE, CONCRETE, OR METAL)
WOODEN HUB
GRAVEL PIT
SAND PIT
BORROW PIT
ROCK QUARRY

UTILITIES SYMBOLS

POWER POLE LINE
TELEPHONE POLE LINE
JOINT TELEPHONE AND POWER
ON POWER POLES
ON TELEPHONE POLES
ANCHOR
STEEL TOWER
STREET LIGHT
PEDESTAL
GAS MAIN
WATER MAIN
CONDUIT
TELEPHONE CABLE IN CONDUIT
ELECTRIC CABLE IN CONDUIT
TELEPHONE MANHOLE
ELECTRIC MANHOLE
BURIED TELEPHONE CABLE
BURIED ELECTRIC CABLE
AERIAL TELEPHONE CABLE
SEWER (SANITARY OR STORM)
SEWER MANHOLE

SCALES



INDEX MAP N.T.S.

Minn. Proj. No. STP-HSIP 4213(1161)

GOVERNING SPECIFICATIONS

THE 2005 EDITION OF THE MINNESOTA DEPARTMENT OF TRANSPORTATION
"STANDARD SPECIFICATION FOR CONSTRUCTION" SHALL GOVERN.

INDEX

SHEET NO. 1	TITLE SHEET
SHEET NO. 2	ESTIMATED QUANTITIES SHEETS
SHEET NO. 3	STANDARD PLATES
SHEET NO. 4	TYPICAL SECTIONS
SHEET NO. 5-8	CONCRETE PAVEMENT DETAILS
SHEET NO. 9	TABULATIONS
SHEET NO. 10	DETOUR SIGNING
SHEET NO. 11	S.W.P.P.P.
SHEET NO. 12-25	PLAN AND PROFILE

THIS PLAN CONTAINS 25 SHEETS

DESIGN DESIGNATION

PROJ. SOIL FACTOR = 130%
ADT (BASE YEAR) 2013 = 580
ADT (20-YEAR) 2033 = 650
R VALUE = 10
ESALS (35-YEAR RIGID) = 681,000
DESIGN LOADING = 10 TON
SHOULDER WIDTH: 6.0'

OR

FUNCTIONAL CLASSIFICATION: MAJOR COLLECTOR
NO. OF TRAFFIC LANES: 2 NO. OF PARKING LANES: 0
DESIGN SPEED: 55 MPH
STA 0+00.00 TO STA 351+89.00
BASED ON STOPPING SIGHT DISTANCE:
HEIGHT OF EYE: 3.5' HEIGHT OF OBJECT: 2.0'
DESIGN SPEED NOT ACHIEVED AT:
STA TO STA MPH

SIGNATURE: *Aaron VanMoer* TYPED OR PRINTED NAME: Aaron VanMoer
DESIGN ENGINEER

I HEREBY CERTIFY THAT THIS PLAN WAS PREPARED BY ME OR UNDER MY DIRECT SUPERVISION AND THAT I AM A DULY LICENSED PROFESSIONAL ENGINEER UNDER THE LAWS OF THE STATE OF MINNESOTA.

DATE: 1/16/13 LICENSE NUMBER: 50428

SIGNATURE: *Suhail Kanwar* TYPED OR PRINTED NAME: Suhail Kanwar
APPROVED: LYON COUNTY ENGINEER

STATE AID APPROVALS:
SIGNATURE: *[Signature]* DATE: 1-17-13
DISTRICT STATE-AID ENGINEER:
REVIEWED FOR COMPLIANCE WITH STATE-AID RULES/POLICY

SIGNATURE: *Julie Skallman* DATE: 2/7/13
STATE-AID ENGINEER:
APPROVED FOR STATE AID AND FEDERAL AID FUNDING

STATE PROJECT NO. 042-610-034
STATE PROJECT NO. 042-070-003

SHEET NO. 1 OF 25 SHEETS

SCHEDULE OF ESTIMATED QUANTITIES

NOTES	SPECIFICATIONS NUMBER	ITEM	UNIT	S.P.		TOTAL ESTIMATED QUANTITIES
				042-610-034	042-070-003	
	2011 . 601	CONSTRUCTION SURVEY	LUMP SUM	1.00		1.00
	2021 . 501	MOBILIZATION	LUMP SUM	0.88	0.12	1.00
	2051 . 501	MAINTENANCE AND RESTORATION OF HAUL ROADS	LUMP SUM	1.00		1.00
1	2104 . 513	SAWING BITUMINOUS PAVEMENT	LIN FT	176.00		176.00
3,16	2105 . 533	SALVAGED AGGREGATE SHOULDERING (PLACED FROM STOCKPILE)	TON	4000.00		4000.00
2	2123 . 503	MOTOR GRADER	HOUR	15.00		15.00
2	2123 . 509	DOZER	HOUR	40.00		40.00
4A,16	2211 . 501	AGGREGATE BASE CL. 5 MOD	TON	2,100.00		2,100.00
4B,16	2211 . 609	OPEN GRADED AGGREGATE BASE MOD	TON	28,660.00		28,660.00
5,16	2221 . 501	AGGREGATE SHOULDERING CL. 5 MOD	TON	10,930.00		10,930.00
7,9	2301 . 538	1" DOWEL BAR (EPOXY COATED)	EACH	14,022.00		14,022.00
6	2301 . 604	CONCRETE PAVEMENT 7.0" (P)	SQ YD	93,520.00	18,821.00	112,341.00
7	2301 . 608	SUPPLEMENTAL PAVEMENT REINFORCEMENT	POUND	18,869.40		18,869.40
10,16	2360 . 501	TYPE SP 12.5 WEAR COURSE MIX 2,B (15% RAP)	TON	1,061.00		1,061.00
11	2563 . 601	DETOUR SIGNING	LUMP SUM	0.88	0.12	1.00
12	2563 . 601	TRAFFIC CONTROL	LUMP SUM	0.88	0.12	1.00
13	2573 . 550	EROSION CONTROL SUPERVISOR	LUMP SUM	0.88	0.12	1.00
14	2575 . 501	SEEDING	ACRE	34.00		34.00
	2575 . 502	SEED MIXTURE 250	LB.	2040.00		2040.00
	2575 . 502	SEED MIXTURE 270	LB.	440.00		440.00
	2575 . 511	MULCH MATERIAL TYPE 1	TON	68.00		68.00
	2575 . 519	DISK ANCHORING	ACRE	34.00		34.00
	2575 . 523	EROSION CONTROL BLANKET 2S (CAT. 3)	SQ YD	3,000.00		3,000.00
	2575 . 531	COMMERCIAL FERTILIZER 24-12-24	TON	5.10		5.10
	2582 . 502	24" STOP LINE WHITE - EPOXY	LIN FT	14.00		14.00
15	2582 . 603	6" SOLID LINE WHITE - EPOXY (WR)	LIN FT	70,140.00		70,140.00
15	2582 . 603	4" SOLID LINE YELLOW - EPOXY (WR)	LIN FT	23,000.00		23,000.00

GENERAL CONSTRUCTION NOTES

1. VEGETATED AREAS WITHIN AND/OR OUTSIDE OF THE RIGHT OF WAY SHALL BE PROTECTED BY THE CONTRACTOR AT ALL TIMES. ANY DAMAGE OUTSIDE OF THE SCHEDULED SEEDING AREA SHALL BE REPAIRED BY THE CONTRACTOR AT NO EXPENSE TO THE AGENCY.

CONSTRUCTION NOTES (ITEM SPECIFIC)

- SAW CUT EXISTING BITUMINOUS SURFACE AS DIRECTED BY THE ENGINEER. ANY MATERIAL AS A RESULT OF CUTTING SHALL BECOME PROPERTY OF THE CONTRACTOR.
- THE CONTRACTOR IS REQUIRED TO PLACE AND DRESS A MINIMUM OF 3 INCHES OF TOPSOIL TO THE FINISHED SHOULDER LINE AFTER AGGREGATE SHOULDERS HAVE BEEN PLACED (MOTOR GRADER AND DOZER HOURS PROVIDED). SEE INSERT "B" ON SHEET 4 FOR DETAILS. EXISTING TOPSOIL ON THE INSLOPE SHALL BE SUFFICIENT TO COMPLETE TOPSOIL PLACEMENT.
- THE CONTRACTOR IS REQUIRED TO PLACE 4000.00 TONS OF SALVAGED AGGREGATE (AS AGGREGATE SHOULDERING) FROM AN EXISTING STOCKPILE. SALVAGED AGGREGATE SHALL NOT BE PLACED AS A FINISHED SURFACE. THE EXISTING SALVAGED AGGREGATE STOCKPILE IS LOCATED NEAR STATION 140+00 LEFT.
- 4A. TOTAL QUANTITY USED FOR RESIDENTIAL ENTRANCES, FIELD APPROACHES & CROSSROADS.
- 4B. THE CONTRACTOR IS RESPONSIBLE TO PLACE AGGREGATE BASE TO THE PROPOSED PROFILE AND CROSS SLOPE PRIOR TO PLACING WEARING SURFACE. TOTAL QUANTITY USED FOR AGGREGATE BASE (APPROACHES AND CROSSROADS A SEPARATE ITEM). SEE PROPOSAL FOR DETAILS.
- TOTAL QUANTITY USED FOR AGGREGATE SHOULDERS ONLY (APPROACHES AND CROSS ROADS A SEPARATE ITEM). THE CONTRACTOR IS REQUIRED TO PROTECT EXCESS AGGREGATE MATERIAL AFTER FINE GRADING. THE EXCESS AGGREGATE MATERIAL SHALL BE BLADED UP AND PLACED FOR SHOULDERING MATERIAL AFTER THE CONCRETE PAVEMENT HAS BEEN PLACED.
- ALL JOINTS SHALL BE INCLUDED IN THE TOTAL BID PRICE. TYPE 4 RUMBLE STRIP AND A CONCRETE SAFETY EDGE SHALL BE INCLUDED WITH THE TOTAL BID PRICE FOR PROJECT S.P. 42-070-003. SEE SHEET 6-7 FOR JOINT DETAILS AND SHEET 8 RUMBLE STRIP DETAILS.
- ALL REINFORCEMENT BARS AND DOWELS SHALL BE EPOXY COATED. THE COATING SHALL CONFORM TO AASHTO M 254 TYPE B AND ASTM A 934 MODIFIED TO A MINIMUM THICKNESS OF 10 MILS AFTER CURE.
- BLANK.
- STANDARD PLATE 1103K SHALL BE MODIFIED TO 3 BARS. SEE SHEET 5-6 FOR DETAILS AND LOCATIONS.
- MATERIAL SHALL BE SPWEB230B WITH 15% RAP (MAXIMUM). TOTAL QUANTITY USED FOR PRIVATE RESIDENCE AND CROSSROADS.
- DETOUR SIGNING ITEM TO INCLUDE ALL SIGN ASSEMBLIES AND BARRICADES SHOWN ON SHEET 10. TRAFFIC CONTROL SIGNING FOR LOCAL TRAFFIC IS A SEPARATE ITEM (SEE NOTE 12).
- THE CONTRACTOR IS REQUIRED TO MAINTAIN ACCESS FOR LOCAL TRAFFIC AT ALL TIMES. ANY AND ALL COSTS ASSOCIATED WITH TRAFFIC CONTROL ITEMS SHALL BE INCLUDED IN THE TOTAL BID PRICE. TRAFFIC CONTROL ITEMS INCLUDED, BUT NOT LIMITED TO SIGNS, BARRICADES, ADVANCED WARNINGS, ADDITIONAL DETOURS, TEMPORARY ROADS OR APPROACHES, PILOT VEHICLE, LANE OPENINGS AND HIGH EARLY STRENGTH STRUCTURAL CONCRETE.
THE CONTRACTOR IS REQUIRED TO PROPERLY PROTECT ALL INTERSECTIONS TO CROSSING TRAFFIC.
THE CONTRACTOR IS REQUIRED TO SUBMIT A DETAILED TRAFFIC CONTROL PLAN TO THE ENGINEER 14 DAYS PRIOR TO THE START OF CONSTRUCTION. DETOUR SIGNING IS A SEPARATE ITEM (SEE NOTE 11).
- THE EROSION CONTROL SUPERVISOR SHALL IMPLEMENT THE SWPPP AND CONDUCT THE EROSION AND SEDIMENT CONTROL PROGRAM IN ACCORDANCE WITH SPECIFICATION 1717.
- SEED ALL DISTURBED AREAS AS DIRECTED BY THE ENGINEER. SEED MIXTURE 270 IS REQUIRED NEAR ALL RESIDENCE AS DIRECTED BY THE ENGINEER (4.86 ACRES).
- WET-REFLECTIVE BEADS AND GROOVED PAVEMENT MARKINGS ARE REQUIRED. SEE PROPOSAL FOR DETAILS. TOTAL QUANTITY FOR PAINTED LINE ONLY.
- THE CONTRACTOR IS REQUIRED TO USE AN ELECTRONIC PLATFORM SCALE CAPABLE OF PRODUCING ELECTRONIC SCALE TICKETS FOR EACH INDIVIDUAL LOAD. SCALE TICKETS SHALL DETERMINE THE TOTAL PAY QUANTITY.

CERTIFIED BY

[Signature]
LICENSED PROFESSIONAL ENGINEER

LIC. NO. 50428

DATE 1/16/13

ESTIMATED QUANTITIES & CONSTRUCTION NOTES

STATE PROJECT NO. 042-610-034
STATE PROJECT NO. 042-070-003

SHEET 2 OF 25 SHEETS

UTILITIES

THE LOCATION OF EXISTING UNDERGROUND UTILITIES ARE SHOWN IN AN APPROXIMATE WAY ONLY. THE EXCAVATION CONTRACTOR SHALL DETERMINE THE EXACT LOCATION OF ALL EXISTING UTILITIES BEFORE COMMENCING WORK. THE CONTRACTOR AGREES TO BE FULLY RESPONSIBLE FOR ANY AND ALL DAMAGES WHICH MIGHT BE OCCASIONED BY HIS FAILURE TO EXACTLY LOCATE AND PRESERVE ANY AND ALL UTILITIES.

XCEL ENERGY (TRACY NORTH)
C/O CHRIS BUNKERS
1505 E. HIGHWAY 7
MONTEVIDEO, MN. 56265
(320) 269-0908

CITY OF COTTONWOOD
C/O STEVE ALMS
86 MAIN ST. WEST
COTTONWOOD, MN. 56229
(507) 423-6488

LINCOLN-PIPESTONE RURAL WATER
C/O DON DRIETZ
E. HWY. 14, BOX 188
LAKE BENTON, MN. 56149-0188
(507) 368-4248
(507) 820-1300 (CELL)

MINNESOTA VALLEY CO-OP
C/O TIM BERTRAND
501 S. 1st. STREET
P.O. BOX 248
MONTEVIDEO, MN. 56265
(320) 269-2163
(1-800-247-5051

MAGELLAN MIDSTREAM PARTNERS, L.P.
C/O H. CYNTHIA PIERCE
ONE WILLIAMS CENTER, MD 27-2
TULSA, OK 74172
OFFICE: 918-574-7464
FAX: (918) 574-7249

CHARTER COMMUNICATIONS
C/O RANDALL STAFKI
1108 E COLLEGE DRIVE
MARSHALL, MN. 56258
(507) 532-5747

MINNESOTA ENERGY RESOURCES
C/O WMIS GROUP
P.O. BOX 2176
SCOTTSBLUFF, NEBRASKA 69363-2176
1-800-889-9508
FAX 1-800-889-2870

FRONTIER CITIZENS COMMUNICATIONS COMPANY
C/O RICK SCHRANTZ
2720 BROADWAY AVE.
SLAYTON, MN. 56172
(507) 836-8883
(507) 227-5973

TICKET NO. 100028428 CONFIRMED 3-9-2010

THE SUBSURFACE UTILITY INFORMATION IN THIS PLAN IS UTILITY QUALITY LEVEL D. THIS UTILITY LEVEL WAS DETERMINED ACCORDING TO THE GUIDELINES OF CI/ASCE 38-.2, ENTITLED "STANDARD GUIDELINES OF THE COLLECTION AND DEPICTION OF EXISTING SUBSURFACE UTILITY DATA."

THE LOCATION OF EXISTING UNDERGROUND UTILITIES ARE SHOWN IN AN APPROXIMATED WAY ONLY. THE EXCAVATION CONTRACTOR SHALL DETERMINE THE EXACT LOCATION OF ALL EXISTING UTILITIES BEFORE COMMENCING WORK. THE CONTRACTOR AGREES TO BE FULLY RESPONSIBLE FOR ANY AND ALL DAMAGES WHICH MIGHT BE OCCASIONED BY HIS FAILURE TO EXACTLY LOCATE AND PRESERVE ANY AND ALL UNDERGROUND UTILITIES.



WARNING

HIGH-PRESSURE PIPELINE CROSSING NEAR STA. 286+00
Excavation and/or Construction Prohibited Without compliance with State One-Call,
And Without Written Permission From Magellan Pipeline Company.

STANDARD PLATES

THE FOLLOWING STANDARD PLATES, APPROVED BY THE FEDERAL HIGHWAY ADMINISTRATION, SHALL APPLY ON THIS PLAN.

PLATE NO.	DESCRIPTION
8000 I	STANDARD BARRICADES
9000 E	APPROACHES AND ENTRANCES
1070 M	SUPPLEMENTAL PAVEMENT REINFORCEMENT
1103 K	TYPICAL DOWEL BAR ASSEMBLY
1150 R	CONSTRUCTION OF HEADER JOINTS

BASIS FOR ESTIMATED QUANTITIES

(2211) AGGREGATE BASE CLASS 5 MOD.
AGGREGATE BASE CLASS 5M 140 LBS./CU.FT.

(2211) OPEN GRADED AGGREGATE BASE MOD.
CROSS SECTIONAL AREA = 10,5401 S.F.
OPEN GRADED AGG. BASE MOD. 140 LBS./CU.FT.

(2221) AGGREGATE SHOULDERING CLASS 5 MOD.
CROSS SECTIONAL AREA = 2,8862 S.F. (EACH SIDE)
AGGREGATE SHOULDERING CLASS 5M 140 LBS./CU.FT.

(2301) CONCRETE PAVEMENT 7.0"
28'-10" (28.83) x 35,070.0'

(2301) SUPPLEMENTAL PAVEMENT REINFORCEMENT
NO. 13 BARS = 0.668 POUNDS/FOOT
16 LONGITUDINAL BARS @ 13.0' & 8 TRANSVERSE BARS @ 27.5' PER PANEL
285.90 POUNDS/PANEL (15' x 28'-10")

(2360) BITUMINOUS WEAR COURSE MIXTURE
BITUMINOUS MATERIAL FOR MIXTURE (MAXIMUM DENSITY)
110 LBS./SQ. YD./INCH OF DEPTH

(2575) SEEDING
AVERAGE INSLOPE (DISTURBED AREA) = 21.0'
SEED MIXTURE 250: 70 LBS./ACRE
SEED MIXTURE 270: 90 LBS./ACRE

(2575) FERTILIZER (24-12-24)
300 LBS./ACRE

(2575) MULCH (TYPE 1)
2 TONS/ACRE

CERTIFIED BY *A. J. Mues* LIC. NO. 50428 DATE 1/16/13
LICENSED PROFESSIONAL ENGINEER

STANDARD PLATES

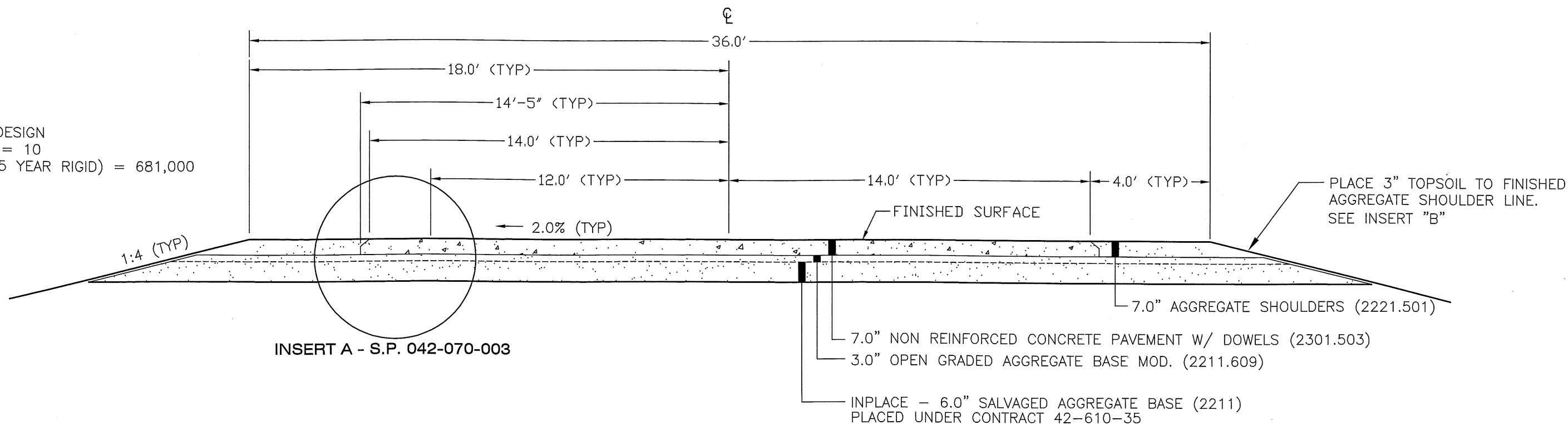
STATE PROJECT NO. 042-610-034
STATE PROJECT NO. 042-070-003

SHEET 3 OF 25 SHEETS

FINISHED CONCRETE PAVEMENT SECTION

STA. 0+50.0 TO STA. 351+20.00

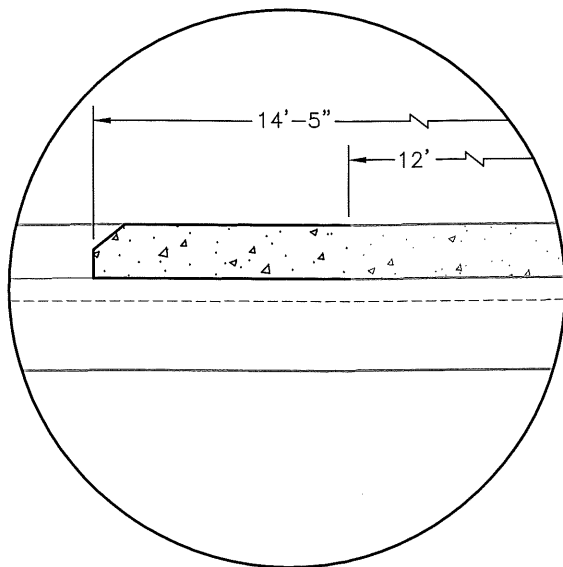
10 TON DESIGN
R VALUE = 10
ESALS (35 YEAR RIGID) = 681,000



INSERT A - S.P. 042-070-003

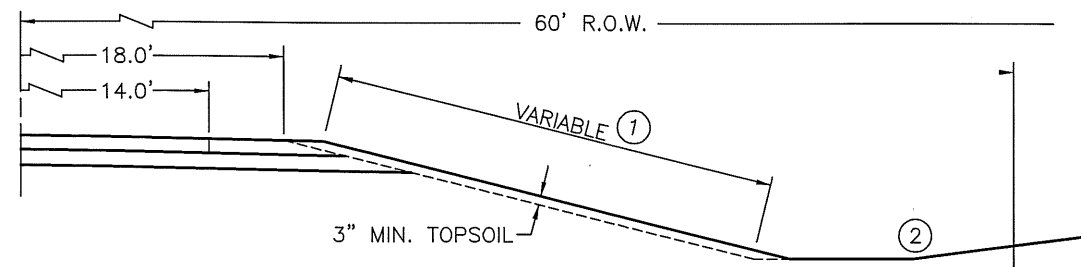
INSERT A - S.P. 042-070-003

TYPICAL BOTH SIDES - NOT TO SCALE



INSERT B

TYPICAL BOTH SIDES - NOT TO SCALE
TYPICAL ALL GRADING SECTIONS



GENERAL CONSTRUCTION NOTES (INSERT B):

1. THE CONTRACTOR IS REQUIRED TO PLACE TOPSOIL, SEED, MULCH AND FERTILIZE THE INSLOPE TO THE FINISHED SHOULDER. THE CONTRACTOR SHALL LIMIT THE IMPACTED AREA TO THE INSLOPE. TOPSOIL ON THE EXISTING INSLOPE SHALL BE SUFFICIENT TO COMPLETE THE ENTIRE TOPSOIL PLACEMENT.
DOZER AND MOTOR GRADER HOURS PROVIDED FOR TOPSOIL PLACEMENT.
2. THE CONTRACTOR SHALL PROTECT ALL VEGETATED AREAS OUTSIDE THE REQUIRED SEEDING AREA (INSLOPE). ANY DAMAGE CAUSED BY THE CONTRACTORS OPERATION OUTSIDE OF THE PROPOSED SEEDING AREA SHALL BE REPAIRED BY THE CONTRACTOR AT NO EXPENSE TO THE AGENCY.

GENERAL CONSTRUCTION NOTES (INSERT A):

1. PROJECT S.P. 42-070-003 SHALL CONSIST OF THE OUTER 2' OF STANDARD WIDTH CONCRETE PAVEMENT AND STRUCTURAL CONCRETE AS WELL AS THE CONCRETE SAFETY EDGE.
2. TYPE 4 RUMBLE STRIP SHALL BE INCLUDED IN THE TOTAL BID PRICE OF STANDARD WIDTH CONCRETE PAVEMENT FOR PROJECT S.P. 42-070-003.
3. SEE SHEET 8 FOR SAFETY EDGE AND RUMBLE STRIP DETAILS.

CERTIFIED BY

[Signature]
LICENSED PROFESSIONAL ENGINEER

LIC. NO.

50428

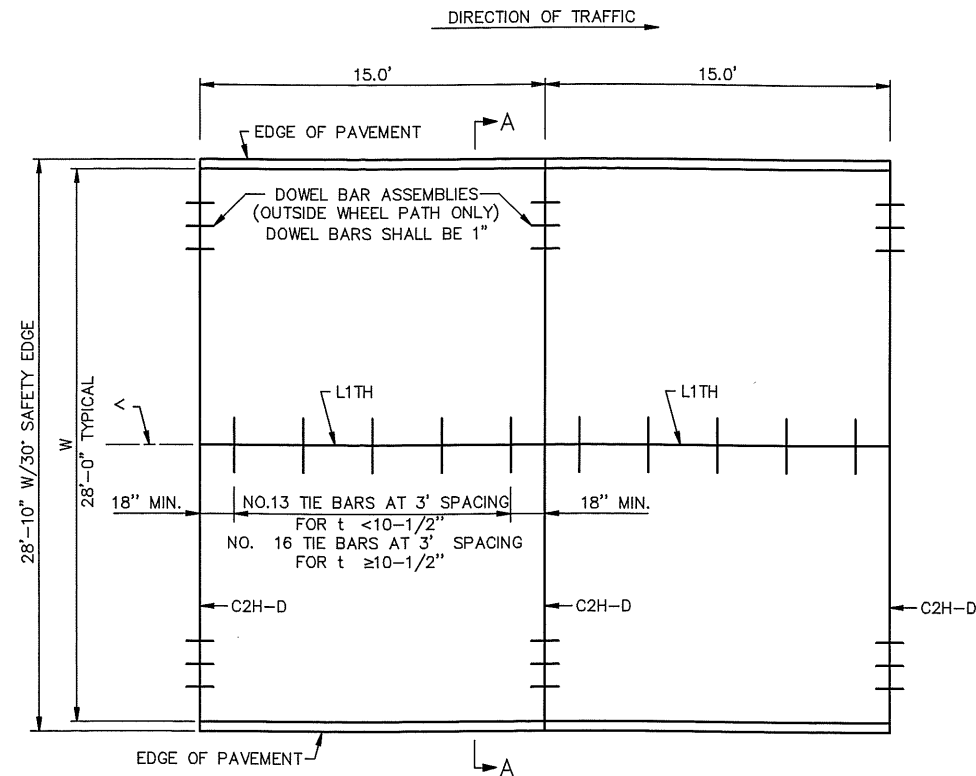
DATE

4/16/13

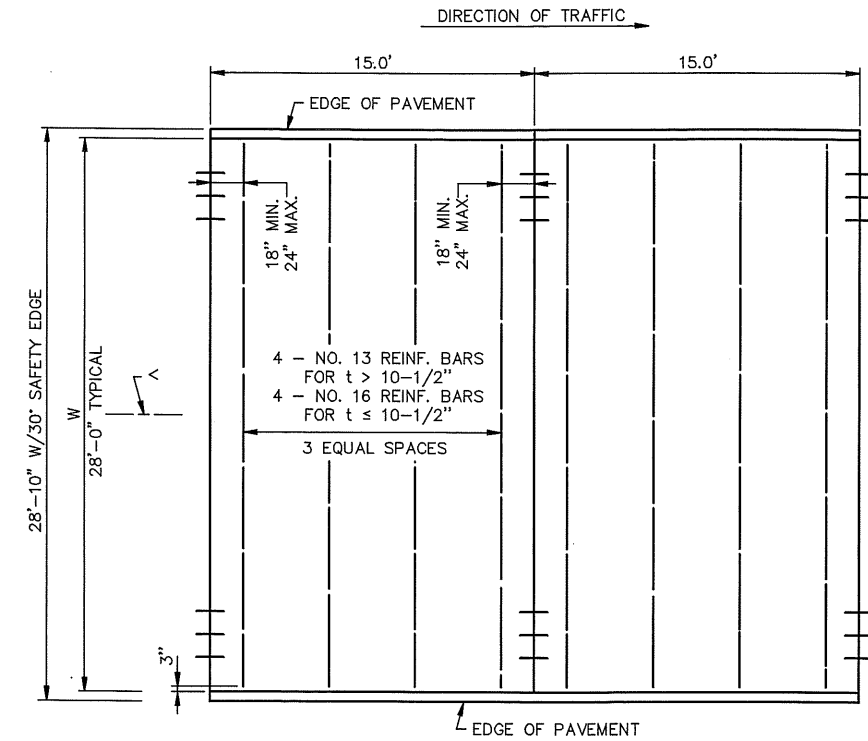
TYPICAL FINISHED CONCRETE PAVEMENT SECTIONS

STATE PROJECT NO. 042-610-034
STATE PROJECT NO. 042-070-003

SHEET 4 OF 25 SHEETS

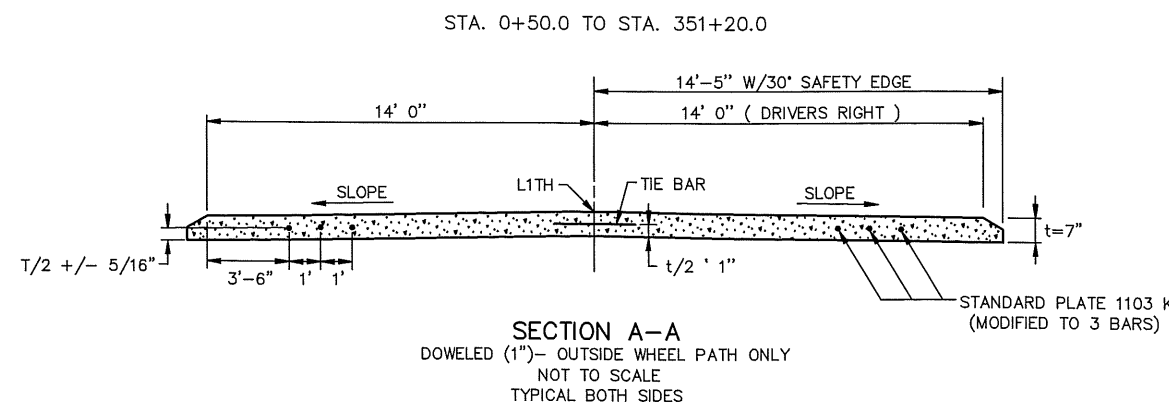


MAINLINE PAVEMENT
DOWELED - OUTSIDE WHEEL PATH ONLY
NOT TO SCALE



PANEL REINFORCEMENT
NOT TO SCALE

*SEE STANDARD PLATE 1070M FOR SUPPLEMENTAL PAVEMENT REINFORCEMENT



SECTION A-A
DOWELED (1") - OUTSIDE WHEEL PATH ONLY
NOT TO SCALE
TYPICAL BOTH SIDES

NOTES:

- STANDARD PLAN 5-297.217 SHALL BE MODIFIED TO INCLUDE 30" SAFETY EDGE AND STANDARD PLATE 1103 K SHALL BE MODIFIED TO 3 BARS ONLY (INSTALLED IN THE OUTSIDE WHEEL PATH).

GENERAL NOTES:

- ALL REBARS ARE IN METRIC DESIGNATIONS
- SEE TYPICAL SECTIONS AND PLAN SHEETS FOR CROSS SLOPES AND PAVEMENT THICKNESS, t .
- DOWEL BAR ASSEMBLIES, WHEN REQUIRED, SHALL BE SIMILAR TO THOSE SHOWN ON STANDARD PLATE 1103.
- ALL REINFORCING BARS SHALL BE EPOXY COATED AND COMPLY WITH SPEC 3301.
- FOR SUPPLEMENTAL PAVEMENT REINFORCEMENT, SEE STANDARD PLATE 1070.
- PANEL REINFORCEMENT:
PLACE IN PANELS WHERE PAVEMENT WIDTH EXCEEDS 15.0' WITHOUT A LONGITUDINAL JOINT. PLACEMENT DEPTH SHALL BE PLANNED $t/2 \pm 1"$. IT IS PREFERRED TO ADD A LONGITUDINAL JOINT RATHER THAN PAVE GREATER THAN 15' IN WIDTH.

APRIL 14, 2010 5-297.217 (1 OF 2)

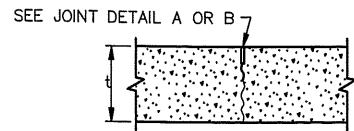
CERTIFIED BY *[Signature]*
LICENSED PROFESSIONAL ENGINEER

LIC. NO. 50428 DATE 1/14/13

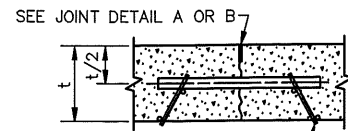
CONCRETE MAINLINE PAVEMENT TYPICAL SECTIONS (15' PANELS)

STATE PROJECT NO. 042-610-034
STATE PROJECT NO. 042-070-003

SHEET 5 OF 25 SHEETS



C1U & C2H



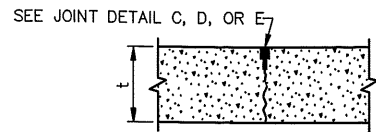
C1U-D & C2H-D

CONTRACTION JOINT REFERENCE, DETAIL & SEALER SPEC. TABLE

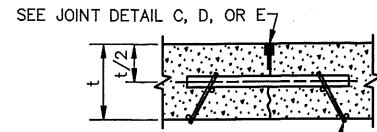
JOINT REFERENCE WITHOUT DOWELS	JOINT REFERENCE WITH DOWELS	JOINT DETAIL	JOINT SEALER SPEC.	JOINT WIDTH
C2H	C2H-D	B	3725	1/8"
C3P	C3P-D	C	3721	3/8"
C4S	C4S-D	D	3722	3/8"
C5H	C5H-D	E	3725	3/8"

LEGEND
 C = CONTRACTION JOINT NO. = JOINT REFERENCE
 U = UNSEALED
 H = HOT POURED
 P = PREFORMED
 S = SILICONE
 -D = DOWEL BARS

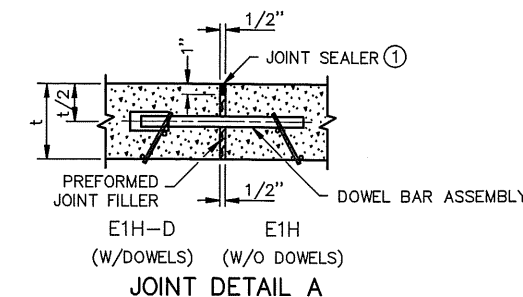
EXAMPLE
 C2H-D



C3P, C4S, C5H



C3P-D, C4S-D, C5H-D

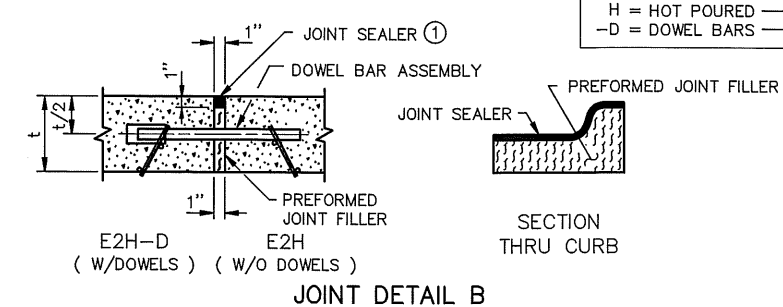


EXPANSION JOINT REFERENCE, DETAIL & SEALER SPEC. TABLE

JOINT REFERENCE WITHOUT DOWELS	JOINT REFERENCE WITH DOWELS	JOINT DETAIL	JOINT SEALER SPEC.	JOINT WIDTH
E2H	E2H-D	B	3725	1"
E4H		C	3725	2"
	E4H-D	D	3725	2"
E8H		STANDARD PLAN 5-297.229	3725	4"

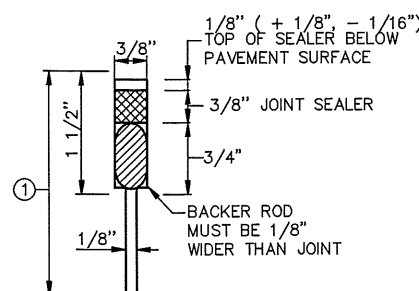
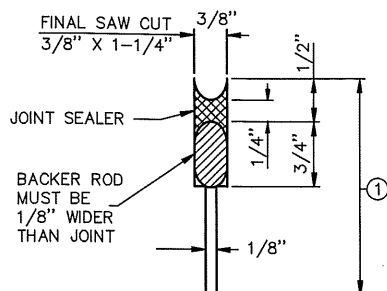
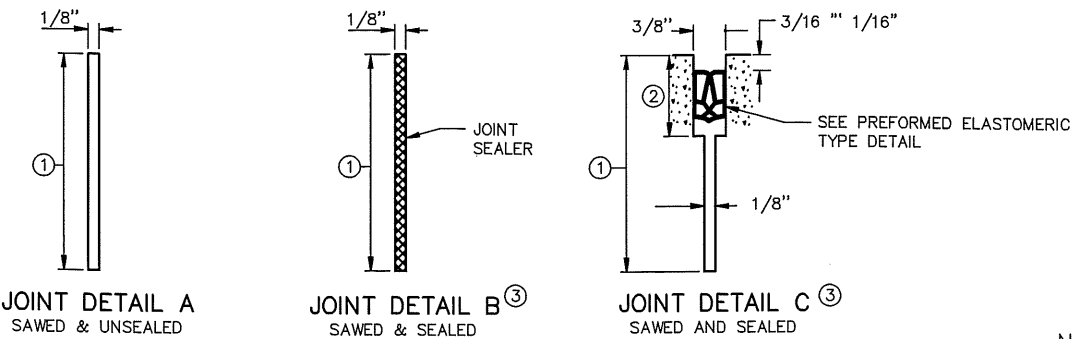
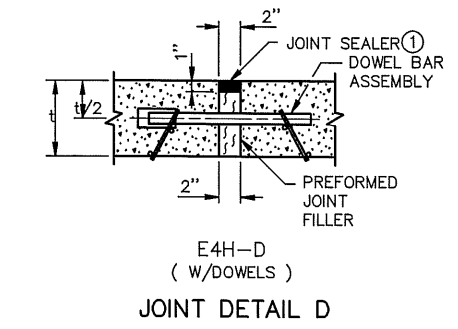
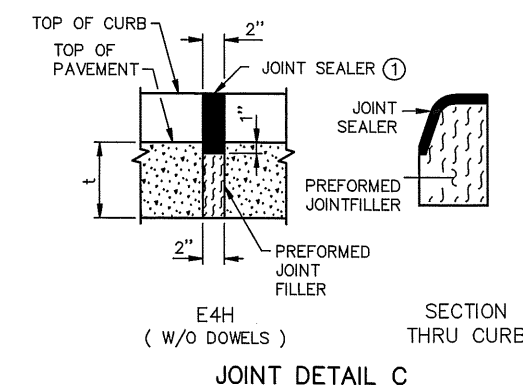
LEGEND
 E = EXPANSION JOINT NO. = JOINT REFERENCE
 H = HOT POURED
 -D = DOWEL BARS

EXAMPLE
 E4H-D



DOWEL BAR DIAMETER TABLE

PAVEMENT THICKNESS t	DOWEL BAR DIAMETER
LESS THAN 6"	NONE
6" - 6 1/2"	1"
7" - 10"	1 1/4"
10 1/2" - 14"	1 1/2"

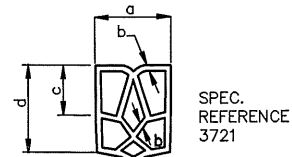


NOTES:

- SEE STANDARD PLATE 1103 FOR DOWEL BAR ASSEMBLY. SEE STANDARD PLATE 1150 FOR CONSTRUCTION OF HEADER JOINTS.
- JOINT WIDTH TOLERANCE IS + 1/16" TO - 1/32"
- FURNISH AND INSTALL ALL JOINT SEALER IN ACCORDANCE WITH THE MANUFACTURER'S RECOMMENDATIONS.
- SEE STANDARD PLANS 5-297.217 AND 5-297.219, FOR CONCRETE MAINLINE/RAMP PAVEMENT.
- SEE PAVING LAYOUTS IN THE PLANS FOR JOINT CLASS DESIGNATION TO BE USED AND SPECIAL REINFORCEMENT REQUIRED.
- ① JOINT DEPTH SHALL BE:
FOR CONCRETE OVERLAYS - 1/3 THE PAVEMENT THICKNESS
FOR CONCRETE PAVEMENT - 1/4 THE PAVEMENT THICKNESS
- ② SEE CONTRACTION JOINT SEALER DETAIL. WHEN USING PREFORMED JOINT SEALER, THE DEPTH SHALL BE 1/4" MORE THAN THE PREFORMED SEALER, WHEN COMPRESSED, TO FIT THE JOINT DESIGN WIDTH. "a" DIMENSION SHALL APPLY AT ANY POINT THROUGHOUT "c" DEPTH. SHARP INTERNAL CORNERS WILL NOT BE PERMITTED. ALL CORNERS SHALL BE PROVIDED WITH SUITABLE FILLET.
- ③ WHEN SEALING, THE JOINT FACES SHALL BE CLEANED AND DRIED BY SANDBLASTING AND AIR BLASTING.
- ④ PRIOR TO SEALING THE JOINT, A 1/2" DIA. CLOSED CELL BACKER ROD SHALL BE PLACED SUCH THAT THE TOP OF THE BACKER ROD IS 1/2" BELOW THE SURFACE OF THE PAVEMENT. NON SELF-LEVELING SILICONE SHALL BE TOOLED INTO THE JOINT MAINTAINING A SEAL AND BEAD THICKNESS OF 1/4".
- ⑤ PRIOR TO SEALING THE JOINT, A 1/2" DIA. CLOSED CELL BACKER ROD CAPABLE OF WITHSTANDING SEALANT TEMPERATURES OF 400 DEGREES F. SHALL BE PLACED 1/2" BELOW THE TOP OF PAVEMENT.

REQUIRED DIMENSIONS

JOINT TYPE	TRANSVERSE NOMINAL SEALER SIZE
a	0.69" + 0.13" - 0.05"
b	0.08" ± 0.02"
c	0.25" MIN.
d	0.63" MIN.

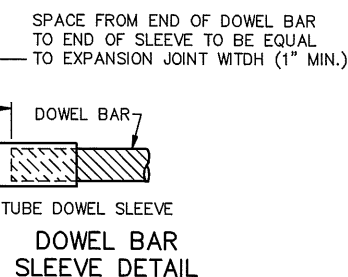


TYPICAL SHAPE FOR SATISFACTORY INSTALLATION IN JOINT (5 CELL MIN.)

PREFORMED ELASTOMERIC TYPE DETAIL

CONTRACTION JOINTS DESIGN C

CERTIFIED BY *[Signature]* LIC. NO. 50428 DATE 4/16/13
 LICENSED PROFESSIONAL ENGINEER



DOWEL BAR SLEEVE DETAIL

NOTES:

- PREFORMED JOINT FILLER MATERIAL, SPEC. 3702.
- FOR DOWEL BAR ASSEMBLY, SEE STANDARD PLATE 1103.
- ① JOINT SEALER SPEC. 3725. THE JOINT FACES SHALL BE CLEANED AND DRIED BY SANDBLASTING AND AIR BLASTING. TOP OF SEALER, FLUSH TO 1/8" BELOW TOP OF PAVEMENT SURFACE. MAKE TOP OF SEALER FOR CURB SECTION D JOINTS FLUSH WITH SURFACE 1/8".

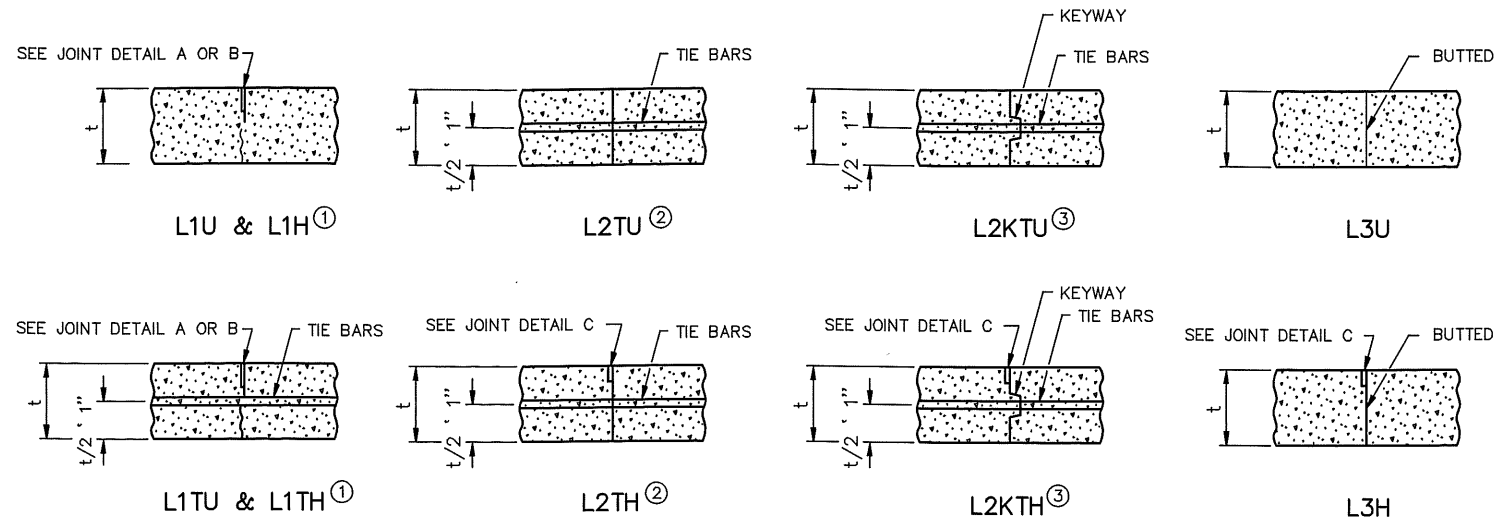
EXPANSION JOINTS DESIGN E

APRIL 14, 2010 5-297.221 (1 OF 2)

CONCRETE PAVEMENT JOINT DETAILS (CONTRACTION & EXPANSION)

STATE PROJECT NO. 042-610-034
 STATE PROJECT NO. 042-070-003

SHEET 6 OF 25 SHEETS



TIEBAR TABLE

PAVEMENT THICKNESS	TIEBAR SIZE	LENGTH
<10-1/2"	NO. 13	30"
≥10-1/2"	NO. 16	36"
ALL THICKNESS WHEN TYING TO CURB AND GUTTER	NO. 13	30"

ALL REBARS ARE IN METRIC DESIGNATIONS

THE TIE BAR SPACING FOR ALL L2T AND L2KT JOINTS SHALL BE 3'-0" CENTER TO CENTER AND BENT 60° AS SHOWN, EXCEPT WHEN NOTED OTHERWISE IN THE PLANS.

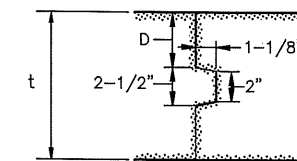
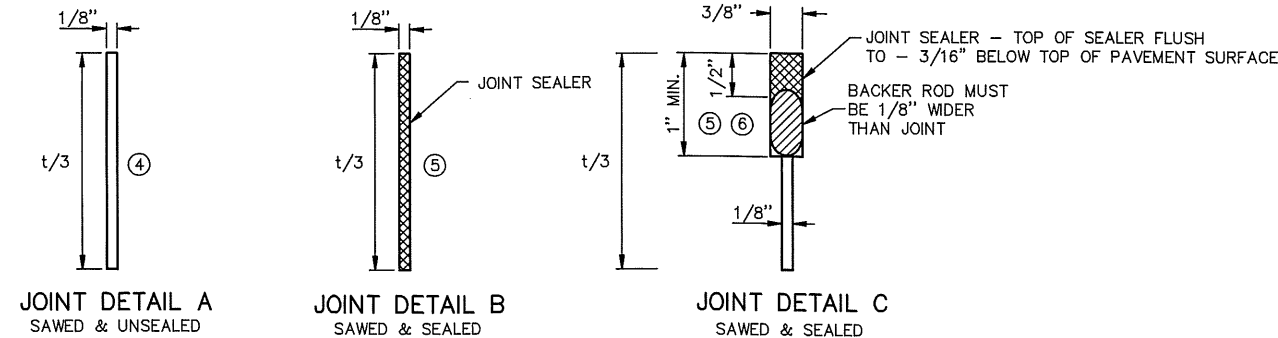
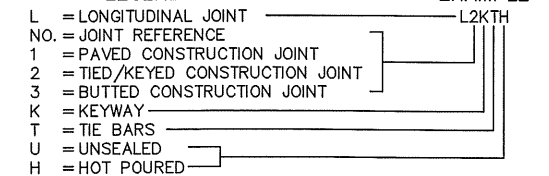
TIE BARS IN THE L2T AND L2KT JOINTS SHALL BE THE SAME SIZE AND LENGTH AS USED FOR THE L1T JOINTS, WHEN TYING PAVEMENT TO PAVEMENT. TIE BARS IN THE L2KT JOINTS SHALL BE NO. 13 X 2' - 6", WHEN TYING CURB & GUTTER TO PAVEMENT.

ALL TIE BARS SHALL BE EPOXY COATED AND COMPLY WITH SPEC. 3301.

LONGITUDINAL JOINT REFERENCE, DETAIL & SEALER SPECIFICATION TABLE

JOINT REFERENCE			JOINT DETAIL	JOINT SEALER SPEC	JOINT WIDTH
WITHOUT TIE BARS	WITH TIE BARS	WITH KEYWAY & TIE BARS			
L1U	L1TU		A	UNSEALED	1/8"
L1H	L1TH		B	3725	1/8"
	L2TU	L2KTU	NONE	UNSEALED	
	L2TH	L2KTH	C	3725	3/8"
L3U			NONE	UNSEALED	
L3H			C	3725	3/8"

LEGEND

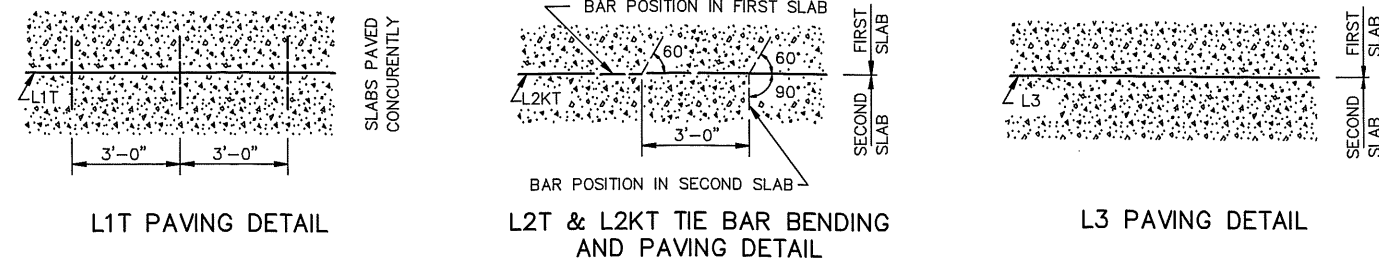


PAVEMENT KEYWAY DETAIL

KEYWAY DIMENSION TABLE

t PAVEMENT THICKNESS	D (TOLERANCE ± 1/4")
< 7"	NO KEYWAY
7" TO 7-1/2"	3"
8" TO 10"	4"
≥ 10-1/2"	5"

KEYWAY (1-1/8" x 2" x 2-1/2") MAY BE FORMED WITH MOLD OR METAL FORM. OTHER APPROVED KEYWAY SHAPES GIVING EQUIVALENT CONSTRUCTION FEATURES MAY BE USED WITH APPROVAL OF THE ENGINEER.



NOTES:

NORMALLY, TIED PAVEMENT WIDTHS SHALL NOT EXCEED FOUR LANES, EXCEPT BRIDGE APPROACH PANELS AND PAVEMENT TAPERS.

JOINT WIDTH TOLERANCE IS + 1/16 IN. TO - 1/32 IN.

FURNISH AND INSTALL ALL JOINT SEALER IN ACCORDANCE WITH THE MANUFACTURER'S RECOMMENDATIONS.

TIED/KEYED AND BUTTED CONSTRUCTION JOINTS SHALL BE UNSEALED EXCEPT AS OTHERWISE NOTED IN THE PLAN OR REQUIRED BY THE ENGINEER.

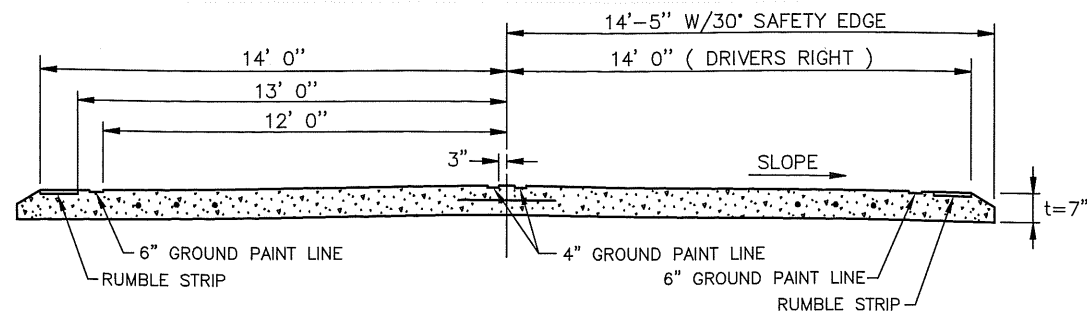
SEE STANDARD PLANS 5-297.217 AND 5-297.219 FOR CONCRETE MAINLINE AND RAMP PAVEMENT.

SEE PAVING LAYOUTS IN THE PLANS FOR JOINT CLASS DESIGNATIONS TO BE USED AND SPECIAL REINFORCEMENT REQUIRED.

WHEN CURB AND GUTTER IS PLACED ADJACENT TO CONCRETE MAINLINE, THE TIEBARS SHALL BE PLACED A MINIMUM OF 2" ABOVE THE CURB AND GUTTER GRADE.

- SEE THE LONGITUDINAL JOINT REFERENCE, DETAIL & SEALER SPECIFICATION TABLE TO DETERMINE JOINT DETAIL.
- CONCRETE PAVEMENTS LESS THAN 7" SHALL USE L2TU AND L2TH JOINTS UNLESS OTHERWISE ALLOWED BY THE ENGINEER.
- CONCRETE PAVEMENTS GREATER THAN OR EQUAL TO 7" SHALL USE L2KTU AND L2KTH JOINTS UNLESS OTHERWISE ALLOWED BY THE ENGINEER.
- THE JOINT FACES SHALL BE CLEANED WITH WATER DURING THE SAW CUTTING OPERATION OR BY WATER BLASTING AFTER SAWING.
- THE JOINT FACES SHALL BE CLEANED AND DRIED BY SANDBLASTING AND AIR BLASTING.
- PRIOR TO SEALING THE JOINT, A 1/2" DIAMETER CLOSED CELL BACKER ROD CAPABLE OF WITHSTANDING SEALANT TEMPERATURES OF 400 DEGREES F. SHALL BE PLACED 1/2" BELOW THE TOP OF THE PAVEMENT.

STA. 0+50.0 TO STA. 351+20.0

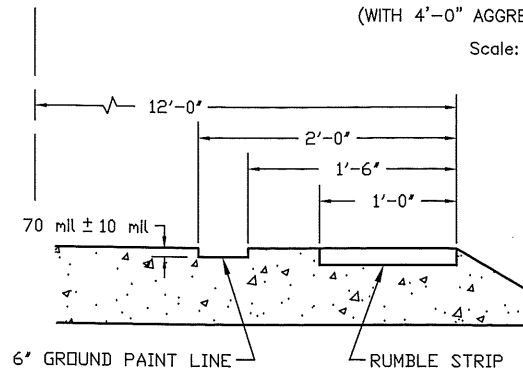


Section View of Two-Lane Roadway

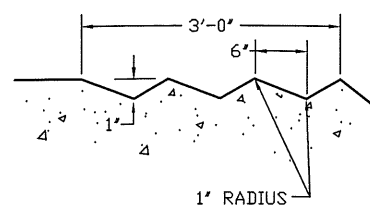
Rumble Strip (Type 4) & Ground Paint Line Detail

(WITH 4'-0" AGGREGATE SHOULDERS)

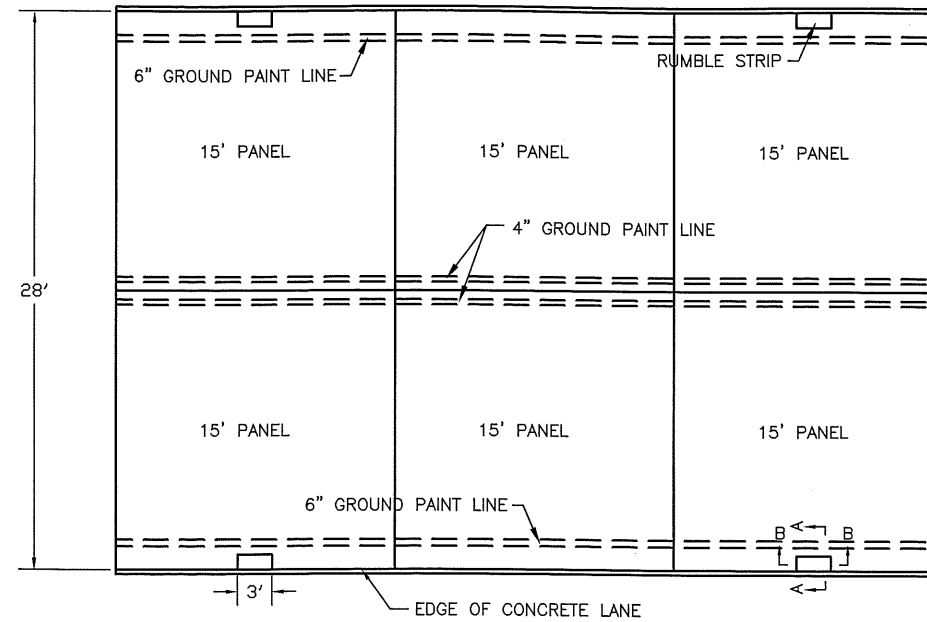
Scale: NONE



Section A-A
Scale: None



Section B-B
Scale: None



Plan View
Rumble Strip (Type 4) & Ground Paint Line Detail
Scale: NONE

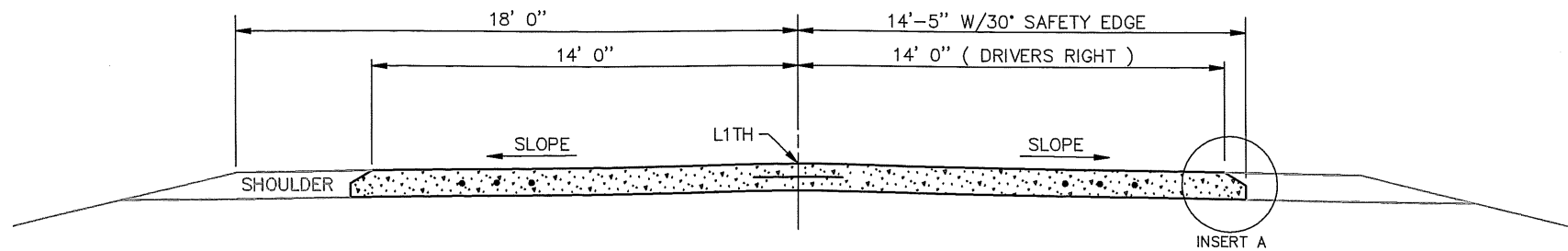
RUMBLE STRIP NOTES:

1. RUMBLE STRIP SHALL BE TYPE 4.
2. RUMBLE STRIP SHALL BE INCLUDED IN TOTAL BID PRICE OF CONCRETE PAVEMENT FOR PROJECT S.P. 042-070-003.
3. RUMBLE STRIP SHALL BE OMITTED 200' ON EACH SIDE OF A RESIDENTIAL ENTRANCE.
4. RUMBLE STRIP SHALL BE OMITTED ON THE TURNING RADIUS OF ALL CROSSROADS.

GROUND PAINT LINE NOTES:

1. GROUND PAINT LINE TO THE DIMENSIONS SHOWN IN ACCORDANCE WITH SPECIFICATION 2582.603. THE GROOVE DEPTH SHALL BE 70 MIL. ± 10 MIL.

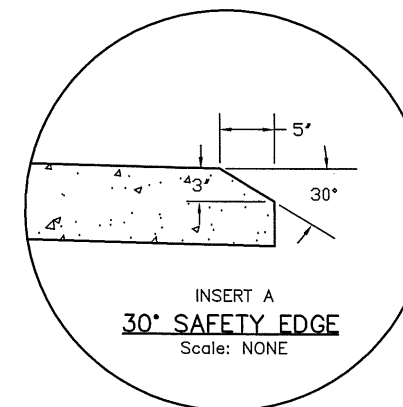
STA. 0+50.0 TO STA. 351+20.0



Section View of Two-Lane Roadway

30° Safety Edge

NOT TO SCALE
TYPICAL BOTH SIDES



SAFETY EDGE NOTES:

1. CONCRETE SAFETY EDGE SHALL BE INCLUDED IN TOTAL BID PRICE OF CONCRETE PAVEMENT FOR PROJECT S.P. 042-070-003.
2. CONCRETE SAFETY EDGE SHALL BE ELIMINATED AT ALL PAVED APPROACHES AND ENTRANCES.
2. ANY EXCAVATION AND/OR SHAPING REQUIRED SHALL BE INCIDENTAL.

CERTIFIED BY [Signature]
LICENSED PROFESSIONAL ENGINEER

LIC. NO. 50428 DATE 1/16/13

RUMBLE STRIP, GROUND PAINT LINE & SAFETY EDGE DETAILS

STATE PROJECT NO. 042-610-034
STATE PROJECT NO. 042-070-003

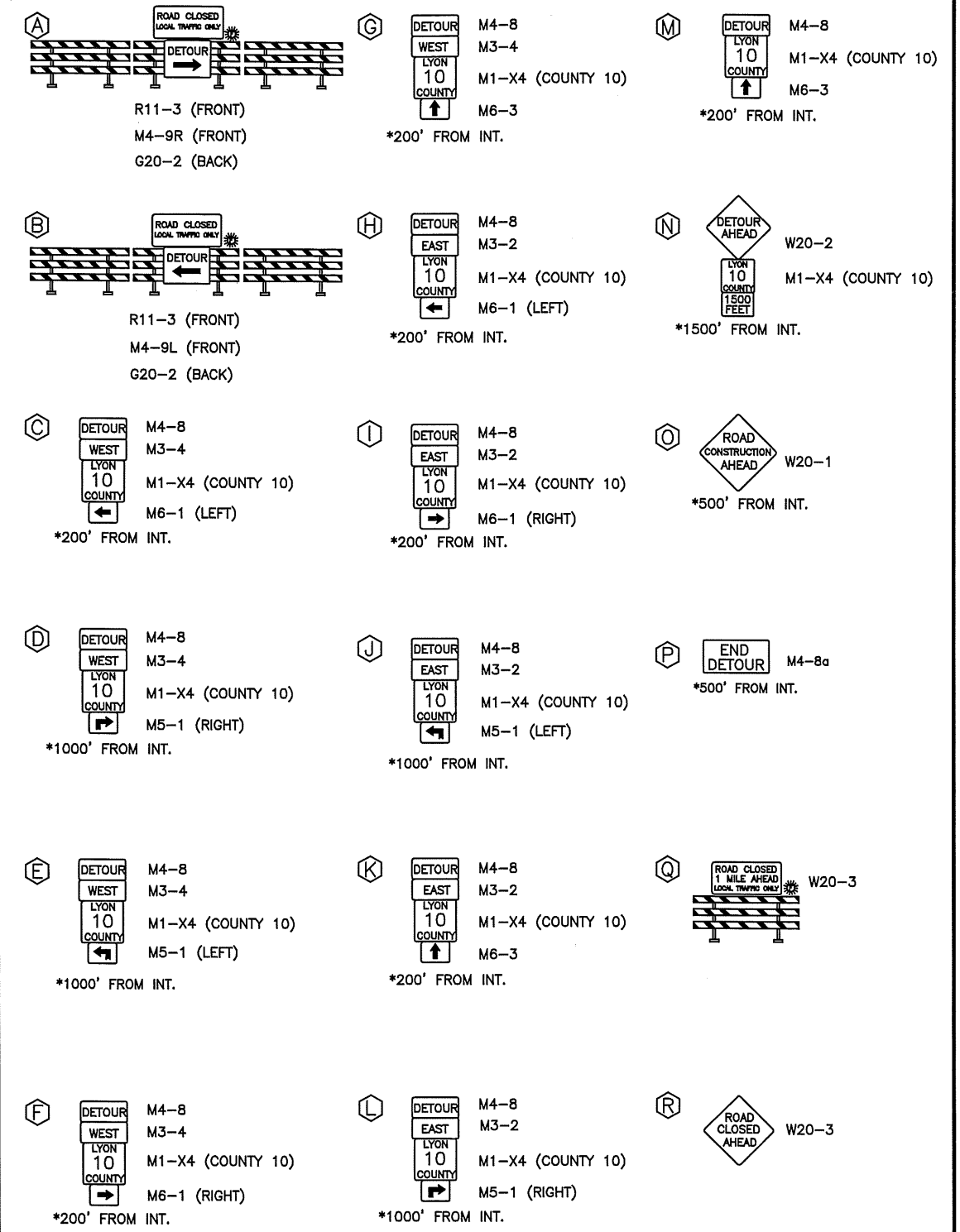
SHEET 8 OF 25 SHEETS

SIGN TABLE					
SIGN	SIGN NO.	QUANTITY	SIZE	COLOR	FLASHERS
	TYPE III BARRICADE	13	60"x48"	ORANGE ON WHITE	9
	W20-2	6	36"x36"	BLACK ON ORANGE	
	W20-1	7	36"x36"	BLACK ON ORANGE	
	R11-3	2	60"x30"	BLACK ON WHITE	
	M4-8a	2	24"x18"	BLACK ON ORANGE	
	M1-X4	31	24"x24"	BLACK ON WHITE	
	M3-2	11	24"x12"	BLACK ON WHITE	
	M3-4	11	24"x12"	BLACK ON WHITE	
	M4-8	25	24"x12"	BLACK ON ORANGE	
	M4-9L	1	30"x24"	BLACK ON ORANGE	
	M4-9R	1	30"x24"	BLACK ON ORANGE	
	M6-3	6	21"x15"	BLACK ON WHITE	
	M6-1 RT.	5	21"x15"	BLACK ON WHITE	
	M6-1 LT.	5	21"x15"	BLACK ON WHITE	
	M5-1 RT.	5	21"x15"	BLACK ON WHITE	
	M5-1 LT.	5	21"x15"	BLACK ON WHITE	
	G20-2	2	60"x24"	BLACK ON ORANGE	
	R11-3a	7	60"x30"	BLACK ON WHITE	
	W20-3	2	36"x36"	BLACK ON ORANGE	

NOTES:

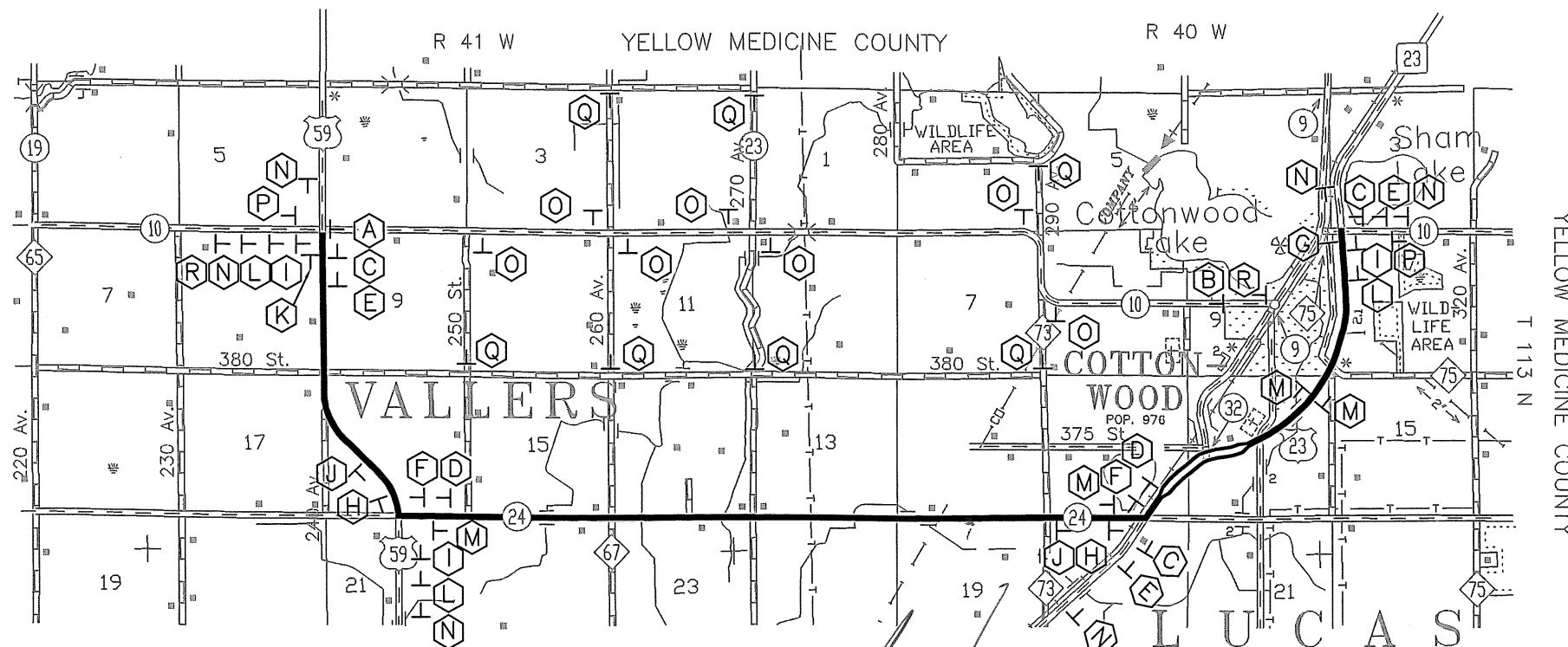
1. ALL TRAFFIC CONTROL DEVICES SHALL BE IN ACCORDANCE WITH THE LATEST MINNESOTA MANUAL ON UNIFORM TRAFFIC CONTROL DEVICES.
2. ALL NECESSARY TRAFFIC CONTROL DEVICES ON THIS PROJECT SHALL BE THE RESPONSIBILITY OF THE CONTRACTOR.
3. TRAFFIC CONTROL FOR LOCAL TRAFFIC IS A SEPARATE PAY ITEM.

SIGN ASSEMBLIES



- ASSEMBLY NOTES:**
1. SIGN ASSEMBLIES A & B CONTAIN 3 BARRICADES AND 1 FLASHER EACH.
 2. EACH "Q" SIGN ASSEMBLIES LOCATED ON 290TH AVE. SHALL BE ALTERED TO READ "0.5 MILES AHEAD."

SIGN LOCATION MAP



CERTIFIED BY *[Signature]* LIC. NO. 50428 DATE 1/16/13
 LICENSED PROFESSIONAL ENGINEER

STORM WATER POLLUTION PREVENTION PLAN (SWPPP)

Project Description

S.P. 042-610-034 & S.P. 042-070-003 Proposed construction involves aggregate base, aggregate shoulders and concrete surfacing from Sta. 0+00.00 to Sta. 351+89.00. The receiving water for storm water from this project will be numerous wetlands, small drainage ditches, tile intakes and the straw blanket lined highway ditch system. BMP'S will be placed prior to construction to protect these resources.

Agency Contacts

The Lyon County Project Engineer and the Contractor are responsible for implementation of the SWPPP and the installation, inspection, and the maintenance of the erosion prevention and sediment control BMP's before and during construction. The Contractor will have an Erosion Control Supervisor who is responsible for coordinating the erosion prevention and sediment control BMP's. Lyon County Maintenance is responsible for long term operation and maintenance of any permanent storm water management system. No permanent storm water management systems are proposed with this project.

The Lyon County Project Engineer is;
 Aaron VanMoer
 504 Fairgrounds Road
 Marshall, Mn. 56258
 (507) 532-8202

Timing of BMP Installation

The erosion prevention and sediment control BMP's shall be installed prior to start of construction, as necessary to minimize erosion from disturbed surfaces and capture sediment on site.

1. Ponds (if applicable) will be excavated prior to any soil disturbance.
2. Temporary perimeter control BMP's will be installed before any up gradient soil disturbance occurs.
3. Permanent and temporary sediment traps and basins (if applicable) will be constructed before any hydraulic conveyance or dewatering procedures occur.
4. Topsoil and temporary erosion control BMP's shall be placed within 7 days of completion of embankment and ponds.
5. Placement of riprap shall be started within 24 hours of placement of the culvert and done in one continuous operation.
6. Once construction activity ceases for 14 days or more, in an area, that area will be stabilized with temporary or permanent BMP's.

S.P. 042-610-034 & S.P. 042-070-003 LAND FEATURE CHANGES (ACRES)

Pre Const. Total Impervious Surface Area of C.S.A.H. 10 Sta. 0+00.00 To Sta. 351+89 - Grading Width w/6" agg. base
PRE CONSTRUCTION TOTAL IMPERVIOUS SURFACE AREA = 34.62 ACRES

S.P. 042-610-034 & S.P. 042-070-003 LAND FEATURE CHANGES (ACRES)

Post Const. Total Impervious Surface Area of C.S.A.H. 10 Sta. 0+00.00 To Sta. 351+89 - Finished Surface w/Shoulders
POST CONSTRUCTION TOTAL IMPERVIOUS SURFACE AREA = 29.08 ACRES

Construction Notes


Construction shall be governed by MN/DOT Spec Book and the special provisions. The Contractor shall maintain a 10% stockpile of erosion control devices at all times for immediate usage. The Contractor shall keep the inspection maintenance log, and submit to the county on a weekly basis.

TMDL Implementation Plans Containing Storm Water Requirements

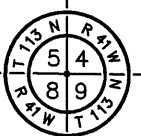
No TMDL Implementation Plans currently contain construction storm water requirements.

Location of SWPPP Requirements in Project Plan

DESCRIPTION	TITLE	LOCATION
Summary of Pervious and Impervious	SWPPP	Sheet No. 11
Direction of Flow	Construction Plan Sheets	Sheet No. 12-25
Receiving Surface Waters	Construction Plan Sheets	Sheet No. 12-25
Final Stabilization	N/A	N/A
Drainage Structures	N/A	N/A
Drainage Tabulation	N/A	N/A
Erosion Control Tabulation	N/A	N/A
Erosion Control Sheets	Construction Plan Sheets	Sheet No. 12-25
Erosion Control Details	Details Sheet	Sheet No. 4
Storm Sewer Tabulation	N/A	N/A
Storm Sewer Plan Sheets	N/A	N/A
Storm Sewer Details	N/A	N/A
Pond Tabulations	N/A	N/A
Pond Sheets	N/A	N/A
Location Of Ponds	N/A	N/A

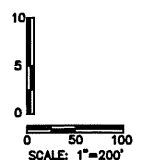
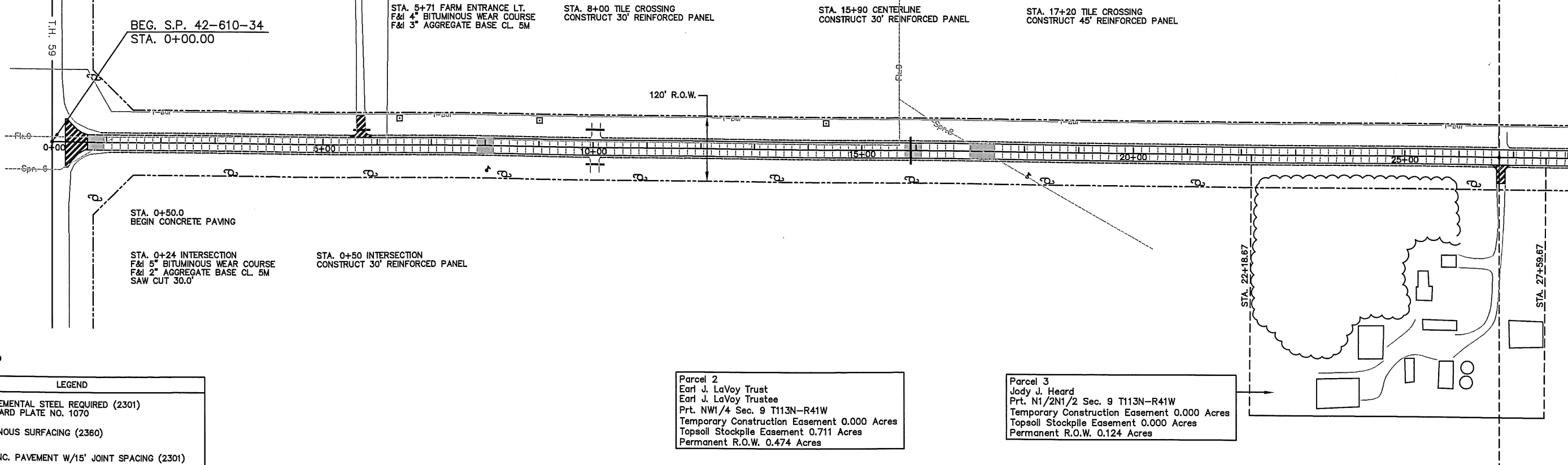
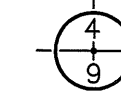
CERTIFIED BY  LIC. NO. 50428 DATE 1/16/13 LICENSED PROFESSIONAL ENGINEER	EROSION CONTROL - STORM WATER POLLUTION PREVENTION PLAN	
	STATE PROJECT NO. 042-610-034 STATE PROJECT NO. 042-070-003	SHEET 11 OF 25 SHEETS

STA. 0+00.00
N: 253272.622
E: 510736.295



Parcel 1
Kirk Lovness
Life Estate Reed Lovness & Betty Lovness
S1/2SW1/4 Sec. 4 T113N-R41W
Temporary Construction Easement 0.351 Acres
Topsoil Stockpile Easement 0.875 Acres
Permanent R.O.W. 0.578 Acres

STA. 26+73.67
N: 253250.681
E: 513409.872

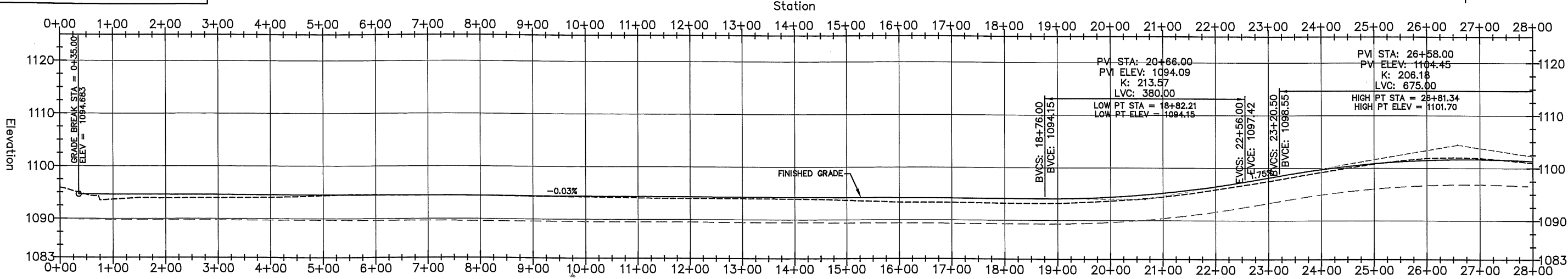


LEGEND

	SUPPLEMENTAL STEEL REQUIRED (2301) STANDARD PLATE NO. 1070
	BITUMINOUS SURFACING (2360)
	7\"/>

Parcel 2
Earl J. LaVoy Trust
Earl J. LaVoy Trustee
Prt. NW1/4 Sec. 9 T113N-R41W
Temporary Construction Easement 0.000 Acres
Topsoil Stockpile Easement 0.711 Acres
Permanent R.O.W. 0.474 Acres

Parcel 3
Jody J. Heard
Earl J. LaVoy Trustee
Prt. N1/2N1/2 Sec. 9 T113N-R41W
Temporary Construction Easement 0.000 Acres
Topsoil Stockpile Easement 0.000 Acres
Permanent R.O.W. 0.124 Acres



1093.72	1094.664	1093.94	1094.635	1093.98	1094.606	1094.10	1094.577	1094.42	1094.548	1094.57	1094.519	1094.48	1094.489	1094.45	1094.460	1094.37	1094.431	1094.28	1094.402	1094.13	1094.373	1094.06	1094.344	1094.06	1094.315	1093.99	1094.286	1093.74	1094.257	1093.39	1094.228	1093.37	1094.199	1093.28	1094.169	1093.27	1094.154	1093.73	1094.471	1094.54	1095.257	1095.93	1096.511	1097.53	1098.187	1099.25	1099.784	1100.85	1100.906	1101.92	1101.543	1101.94	1101.695
1+00	2+00	3+00	4+00	5+00	6+00	7+00	8+00	9+00	10+00	11+00	12+00	13+00	14+00	15+00	16+00	17+00	18+00	19+00	20+00	21+00	22+00	23+00	24+00	25+00	26+00	27+00																											

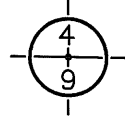
PLAN AND PROFILE

CERTIFIED BY *[Signature]* LIC. NO.: 50428 DATE: 1/16/13

STATE PROJECT 042-610-034
STATE PROJECT 042-070-003

SHEET 12 OF 25 SHEETS

STA. 26+73.67
N: 253250.681
E: 513409.872

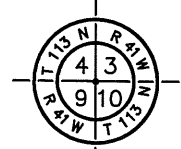


Parcel 4
Kirk Lovness
Life Estate Reed Lovness & Betty Lovness
W1/2SE1/4 Sec. 4 T113N-R41W
Temporary Construction Easement 0.556 Acres
Topsoil Stockpile Easement 0.460 Acres
Permanent R.O.W. 0.307 Acres

Parcel 5
Rebecca Olmstead
Prt. E1/2SE1/4 Sec. 4 T113N-R41W
Temporary Construction Easement 0.000 Acres
Topsoil Stockpile Easement 0.200 Acres
Permanent R.O.W. 0.134 Acres

Parcel 6
Barak J. Borge & Katie Letourneau-Bjorge
Prt. E1/2SE1/4 Sec. 4 T113N-R41W
Temporary Construction Easement 0.000 Acres
Topsoil Slope Easement 0.260 Acres
Permanent R.O.W. 0.173 Acres

STA. 53+47.33
N: 253228.740
E: 516083.449



STA. 37+51 TILE CROSSING
CONSTRUCT 45' REINFORCED PANEL

STA. 39+42 CENTERLINE
CONSTRUCT 30' REINFORCED PANEL

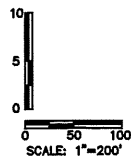
STA. 50+83 FARM ENTRANCE LT.
F&I 4" BITUMINOUS WEAR COURSE
F&I 3" AGGREGATE BASE CL. 5M

STA. 26+73 FARM ENTRANCE RT.
F&I 4" BITUMINOUS WEAR COURSE
F&I 3" AGGREGATE BASE CL. 5M

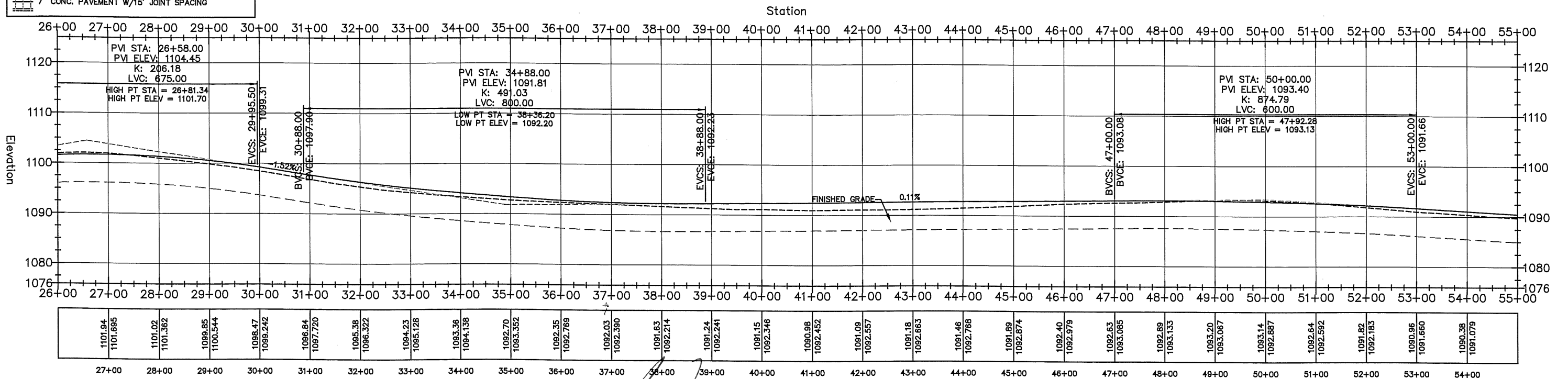
STA. 53+48 TOWNSHIP ROAD RT.
F&I 5" BITUMINOUS WEAR COURSE
F&I 2" AGGREGATE BASE CL. 5M

Parcel 7
George H. Laleman
Prt. NW1/4NE1/4 Sec. 9 T113N-R41W
Temporary Slope Easement 0.00 Acres
Topsoil Stockpile Easement 0.431 Acres
Permanent R.O.W. 0.287 Acres

Parcel 8
Rebecca Olmstead
NE1/4NE1/4 Sec. 9 T113N-R41W
Temporary Slope Easement 1.908 Acres
Stockpile Easement 0.474 Acres
Permanent R.O.W. 0.298 Acres



LEGEND	
	SUPPLEMENTAL STEEL REQUIRED STANDARD PLATE NO. 1070
	BITUMINOUS SURFACING
	7" CONC. PAVEMENT W/15' JOINT SPACING



CERTIFIED BY *Alan Van Meter*
LICENSED PROFESSIONAL ENGINEER

LIC. NO.: 50428 DATE: 4/16/13

STATE PROJECT 042-610-034
STATE PROJECT 042-070-003

PLAN AND PROFILE

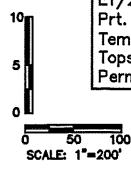
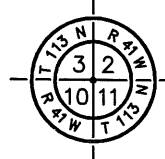
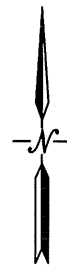
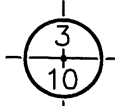
SHEET 13 OF 25 SHEETS

STA. 80+09.65
N: 253215.291
E: 518743.953

Parcel 14
Steven R. Doom
W1/2SE1/4 Sec. 3 T113N-R41W
Temporary Construction Easement 0.397 Acres
Topsoil Stockpile Easement 0.464 Acres
Permanent R.O.W. 0.305 Acres

Parcel 15
George H. Laleman
E1/2SE1/4 Sec. 3 T113N-R41W
Temporary Construction Easement 0.324 Acres
Topsoil Stockpile Easement 0.447 Acres
Permanent R.O.W. 0.275 Acres

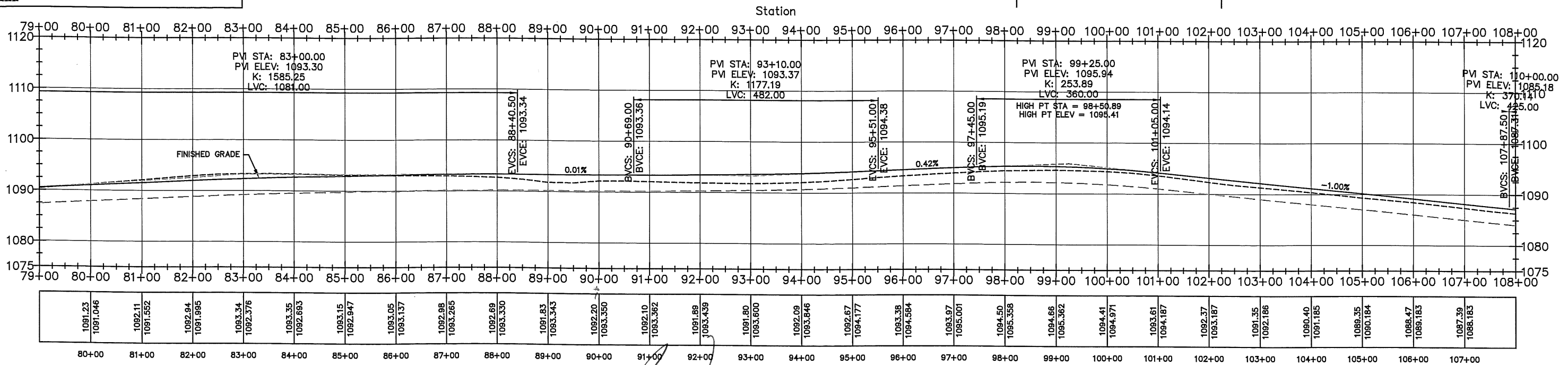
STA. 105+71.96
N: 253201.843
E: 521408.007



Parcel 16
Steven R. Doom
E1/2NE1/4NW1/4 Sec. 10 T113N-R41W &
Prt. NE1/4 Sec. 10 T113N-R41W
Temporary Construction Easement 0.000 Acres
Topsoil Stockpile Easement 0.987 Acres
Permanent R.O.W. 0.659 Acres

LEGEND

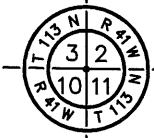
	SUPPLEMENTAL STEEL REQUIRED STANDARD PLATE NO. 1070
	BITUMINOUS SURFACING
	7" CONC. PAVEMENT W/15' JOINT SPACING



CERTIFIED BY *Alan Van Meter* LIC. NO.: 50428 DATE: 1/16/13 STATE PROJECT 042-610-034 SHEET 15 OF 25 SHEETS
 LICENSED PROFESSIONAL ENGINEER STATE PROJECT 042-070-003

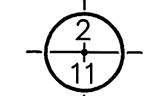
PLAN AND PROFILE

STA. 106+71.96
 N: 253201.843
 E: 521408.007



Parcel 18
 George H. & Rita Laleman
 C4/D Mark Laleman & Cheryl Laleman
 S1/2SW1/4 Sec. 2 T113N-R41W
 Temporary Construction Easement 0.000 Acres
 Topsoil Stockpile Easement 0.609 Acres
 Permanent R.O.W. 0.599 Acres

STA. 133+12.96
 N: 253184.783
 E: 524048.947



STA. 116+34 CENTERLINE & TILE CROSSING
 CONSTRUCT 45' REINFORCED PANEL

STA. 122+86 FARM ENTRANCE LT.
 F&I 4" BITUMINOUS WEAR COURSE
 F&I 3" AGGREGATE BASE CL. 5M

STA. 133+09 CENTERLINE
 CONSTRUCT 30' REINFORCED PANEL

STA. 132+30 TILE CROSSING
 CONSTRUCT 30' REINFORCED PANEL

Parcel 19
 Leon & Deborah Doom
 NW1/4NW1/4 Sec. 11 T113N-R41W
 Temporary Construction Easement 0.000 Acres
 Topsoil Stockpile Easement 0.699 Acres
 Permanent R.O.W. 0.296 Acres

Parcel 20
 George H. Laleman
 NE1/4NW1/4 Sec. 11 T113N-R41W
 Temporary Construction Easement 0.000 Acres
 Topsoil Stockpile Easement 0.909 Acres
 Permanent R.O.W. 0.303 Acres

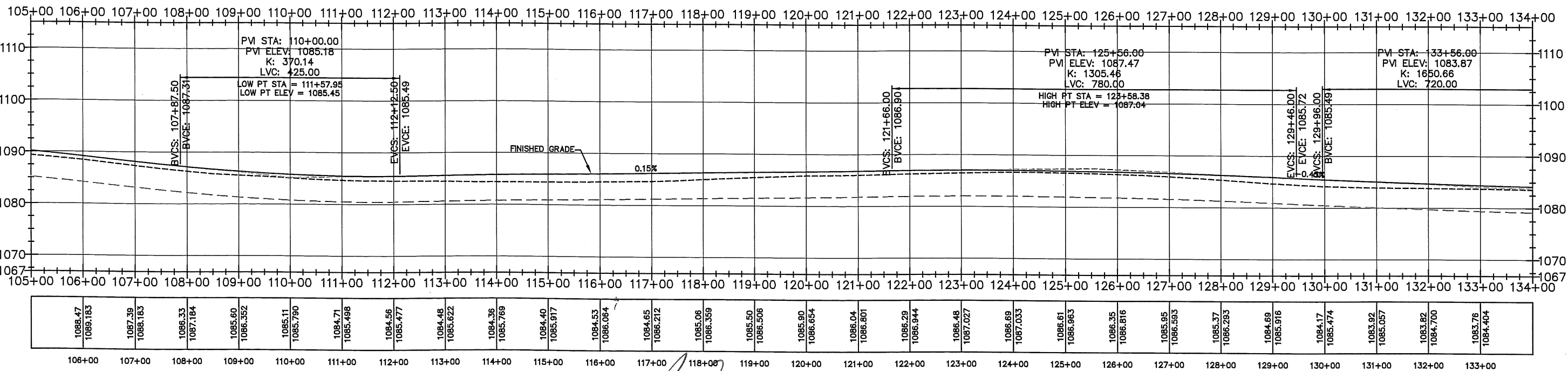


SCALE: 1"=200'

LEGEND

	SUPPLEMENTAL STEEL REQUIRED STANDARD PLATE NO. 1070
	BITUMINOUS SURFACING
	7" CONC. PAVEMENT W/15' JOINT SPACING

Station



CERTIFIED BY *[Signature]* LIC. NO.: 50428 DATE: 4/16/13 STATE PROJECT 042-610-034
 LICENSED PROFESSIONAL ENGINEER STATE PROJECT 042-070-003
 PLAN AND PROFILE SHEET 16 OF 25 SHEETS

STA. 133+12.96
N: 253184.783
E: 524048.947

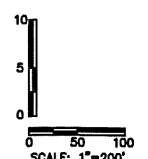
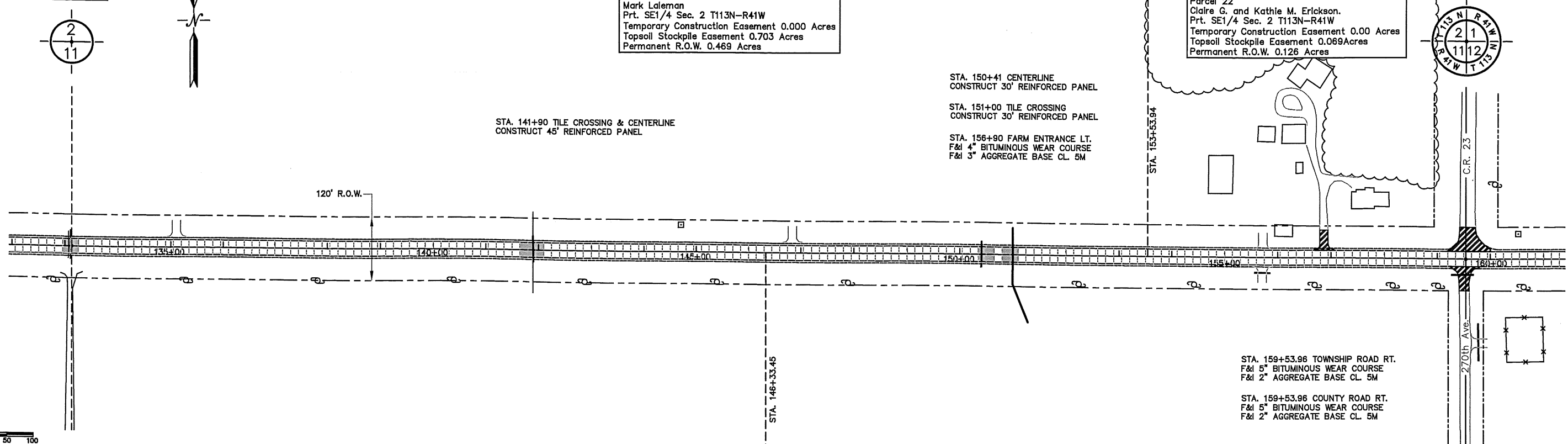
STA. 159+53.95
N: 253167.722
E: 526689.887

Parcel 21
Mark Laleman
Prt. SE1/4 Sec. 2 T113N-R41W
Temporary Construction Easement 0.000 Acres
Topsoil Stockpile Easement 0.703 Acres
Permanent R.O.W. 0.469 Acres

Parcel 22
Claire G. and Kathie M. Erickson.
Prt. SE1/4 Sec. 2 T113N-R41W
Temporary Construction Easement 0.00 Acres
Topsoil Stockpile Easement 0.069 Acres
Permanent R.O.W. 0.126 Acres

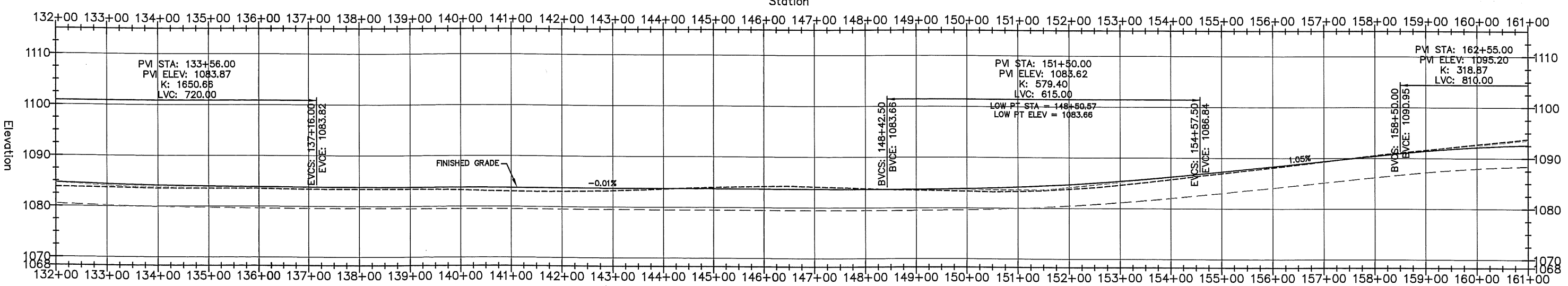
Parcel 23
Stanley G. Aamodt
W1/2NE1/4 Sec. 11 T113N-R41W
Temporary Construction Easement 0.000 Acres
Topsoil Stockpile Easement 0.909 Acres
Permanent R.O.W. 0.303 Acres

Parcel 24
Stanley G. Aamodt
N1/2NE1/4NE1/4 Sec. 11 T113N-R41W
Temporary Construction Easement 0.000 Acres
Topsoil Stockpile Easement 0.585 Acres
Permanent R.O.W. 0.296 Acres



LEGEND

	SUPPLEMENTAL STEEL REQUIRED STANDARD PLATE NO. 1070
	BITUMINOUS SURFACING



1083.66	1084.09	1083.58	1084.168	1083.54	1083.993	1083.54	1083.879	1083.41	1083.825	1083.40	1083.810	1083.41	1083.796	1083.30	1083.782	1083.04	1083.768	1083.05	1083.754	1083.24	1083.740	1083.61	1083.727	1083.96	1083.713	1084.21	1083.699	1084.14	1083.685	1083.79	1083.671	1083.53	1083.665	1083.34	1083.657	1083.33	1084.201	1083.83	1084.718	1084.65	1085.407	1085.75	1086.269	1086.97	1087.288	1088.12	1088.336	1089.33	1089.363	1090.57	1090.431	1091.63	1091.439	1092.73	1092.173
133+00	134+00	135+00	136+00	137+00	138+00	139+00	140+00	141+00	142+00	143+00	144+00	145+00	146+00	147+00	148+00	149+00	150+00	151+00	152+00	153+00	154+00	155+00	156+00	157+00	158+00	159+00	160+00	161+00																											

PLAN AND PROFILE

CERTIFIED BY: LIC. NO.: 50428 DATE: 1/16/13

STATE PROJECT 042-610-034
STATE PROJECT 042-070-003
SHEET 17 OF 25 SHEETS

STA. 159+53.95

N: 253167.722
E: 526689.887

STA. 186+43.41

N: 253181.482
E: 529379.307

Parcel 26
Jeffrey Allen Wee
Prt. W1/2SW1/4 Sec. 1 T113N-R41W
Temporary Construction Easement 0.000 Acres
Topsoil Stockpile Easement 0.000 Acres
Permanent R.O.W. 0.011 Acres

Parcel 25
David E. Nissen, Daniel A. Nissen and Deborah M. Nissen Johansen
Prt. W1/2SW1/4 Sec. 1 T113N-R41W
Temporary Construction Easement 0.000 Acres
Topsoil Stockpile Easement 0.429 Acres
Permanent R.O.W. 0.286 Acres

Parcel 27
Wendy Suzann Rialson, James Marvin Rialson, and Tony Jay Rialson
Life Estate John W. Rialson
E1/2SW1/4 Sec. 1 T113N-R41W
Temporary Construction Easement 0.000 Acres
Topsoil Stockpile Easement 0.463 Acres
Permanent R.O.W. 0.309 Acres

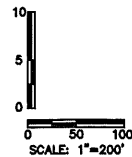
Parcel 28
Minnesota Valley Cooperative Light and Power
Prt. NW1/4NW1/4 Sec 12 T113N-R41W
Temporary Construction Easement 0.000 Acres
Topsoil Stockpile Easement 0.049 Acres
Permanent R.O.W. 0.033 Acres

STA. 165+70 FARM ENTRANCE RT.
F&I 4" BITUMINOUS WEAR COURSE
F&I 3" AGGREGATE BASE CL. 5M

STA. 165+70 FARM ENTRANCE LT.
F&I 4" BITUMINOUS WEAR COURSE
F&I 3" AGGREGATE BASE CL. 5M

Parcel 29
Scott Boehne and Lee Ann Boehne
Prt. NW1/4NW1/4 SEC. 12 T113N-R41W
Temporary Construction Easement 0.000 Acres
Topsoil Stockpile Easement 0.403 Acres
Permanent R.O.W. 0.269 Acres

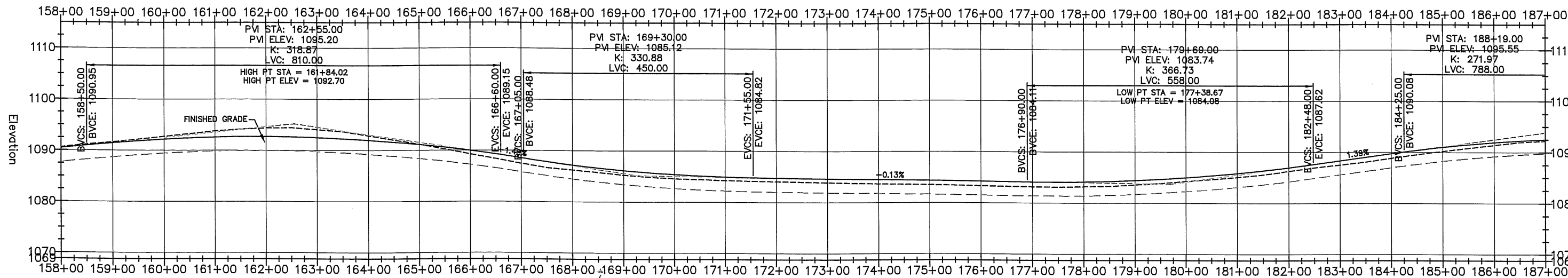
Parcel 30
Edward G. Boehne
NE1/4NW1/4 SEC. 12 T113N-R41W
Temporary Construction Easement 0.000 Acres
Topsoil Stockpile Easement 0.463 Acres
Permanent R.O.W. 0.309 Acres



LEGEND

- SUPPLEMENTAL STEEL REQUIRED
STANDARD PLATE NO. 1070
- BITUMINOUS SURFACING
- 7" CONC. PAVEMENT W/15' JOINT SPACING

Station



1091.611	1091.430	1092.73	1092.173	1093.79	1092.593	1094.38	1092.700	1094.05	1092.493	1092.87	1091.973	1091.17	1091.138	1089.28	1089.991	1087.49	1088.554	1086.25	1087.198	1085.25	1086.143	1084.57	1085.391	1084.26	1084.941	1084.08	1084.763	1083.89	1084.630	1083.67	1084.497	1083.53	1084.364	1083.33	1084.232	1083.17	1084.100	1083.21	1084.151	1083.56	1084.435	1084.28	1085.011	1085.09	1085.960	1086.30	1086.982	1087.53	1088.339	1088.84	1089.728	1090.22	1091.013	1091.42	1091.942
159+00	160+00	161+00	162+00	163+00	164+00	165+00	166+00	167+00	168+00	169+00	170+00	171+00	172+00	173+00	174+00	175+00	176+00	177+00	178+00	179+00	180+00	181+00	182+00	183+00	184+00	185+00	186+00																												

CERTIFIED BY LICENSED PROFESSIONAL ENGINEER

LIC. NO.: 50428 DATE: 1/16/13

STATE PROJECT 042-610-034
STATE PROJECT 042-070-003

PLAN AND PROFILE

SHEET 18 OF 25 SHEETS

STA. 186+43.41
N: 253181.482
E: 529379.307

Parcel 31
John W. Rierson
Prt. W1/2SE1/4 Sec. 1 T113N-R41W
Temporary Construction Easement 0.000 Acres
Topsoil Stockpile Easement 0.065 Acres
Permanent R.O.W. 0.171 Acres

Parcel 32
Betty Dahl Johnson
Prt. W1/2SE1/4 Sec. 1 T113N-R41W
Temporary Construction Easement 0.000 Acres
Topsoil Stockpile Easement 0.206 Acres
Permanent R.O.W. 0.137 Acres

Parcel 33
Loren D. Anderson
E1/2SE1/4 Sec. 1 T113N-R41W
Temporary Slope Easement 0.00 Acres
Topsoil Stockpile Easement 0.463 Acres
Permanent R.O.W. 0.309 Acres

STA. 213+33.00
N: 253195.560
E: 532068.862

STA. 197+36 CENTERLINE
CONSTRUCT 30' REINFORCED PANEL

STA. 197+89 TILE CROSSING
CONSTRUCT 30' REINFORCED PANEL

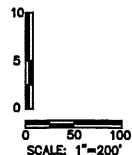
STA. 200+36 TILE CROSSING
CONSTRUCT 30' REINFORCED PANEL

120' PROPOSED R.O.W.

STA. 186+44 FARM ENTRANCE RT.
F&I 4" BITUMINOUS WEAR COURSE
F&I 3" AGGREGATE BASE CL. 5M

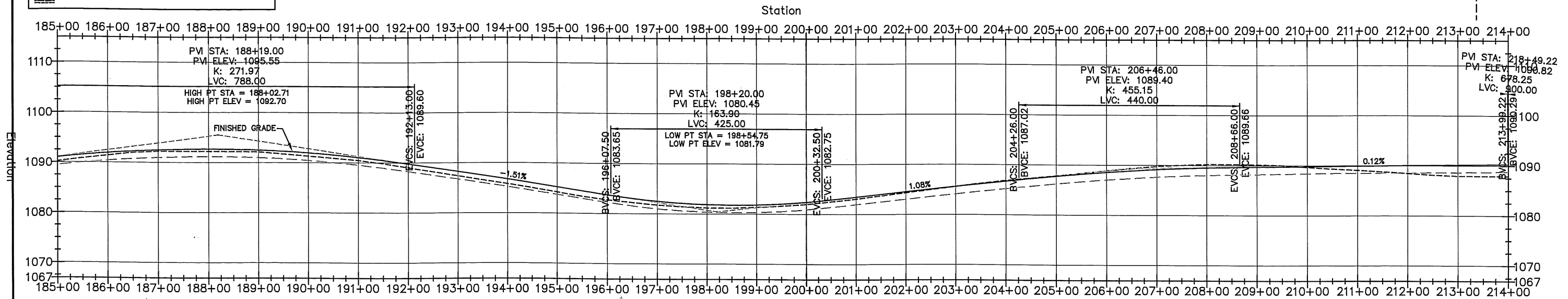
STA. 189+85 FARM ENTRANCE LT.
F&I 5" BITUMINOUS WEAR COURSE
F&I 2" AGGREGATE BASE CL. 5M
SAW CUT 16.0'

Parcel 34
Donald Charles Bot and Rosemary Bot
N1/2NE1/4 SEC. 12 T113N-R41W
Temporary Construction Easement 0.000 Acres
Topsoil Stockpile Easement 0.926 Acres
Permanent R.O.W. 0.617 Acres



LEGEND

- SUPPLEMENTAL STEEL REQUIRED
STANDARD PLATE NO. 1070
- BITUMINOUS SURFACING
- 7" CONC. PAVEMENT W/15' JOINT SPACING



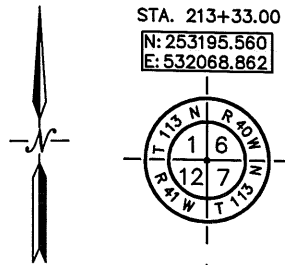
1091.42	1091.942	1092.23	1092.504	1092.24	1092.698	1092.16	1092.524	1091.34	1091.982	1090.50	1091.073	1089.05	1089.796	1087.40	1088.291	1085.83	1086.782	1084.25	1085.273	1082.76	1083.765	1081.75	1082.517	1081.22	1081.876	1081.38	1081.849	1082.00	1082.430	1083.09	1083.483	1084.35	1084.587	1085.63	1085.652	1086.87	1086.736	1087.85	1087.760	1088.90	1088.573	1089.82	1089.165	1090.24	1089.538	1090.17	1089.703	1089.70	1089.621	1089.12	1089.339	1088.49	1089.057	1087.98	1089.174
186+00	187+00	188+00	189+00	190+00	191+00	192+00	193+00	194+00	195+00	196+00	197+00	198+00	199+00	200+00	201+00	202+00	203+00	204+00	205+00	206+00	207+00	208+00	209+00	210+00	211+00	212+00	213+00	214+00																											

PLAN AND PROFILE

CERTIFIED BY: *[Signature]* LIC. NO.: 50428 DATE: 1/16/13

STATE PROJECT 042-610-034
STATE PROJECT 042-070-003

SHEET 19 OF 25 SHEETS



STA. 213+33.00
N: 253195.560
E: 532068.862

Parcel 35
Mark S. Dahl
Prt. SW1/4 Sec. 6 T113N-R40W
Temporary Construction Easement 0.000 Acres
Topsoil Stockpile Easement 0.389 Acres
Permanent R.O.W. 0.260 Acres

Parcel 36
John W. Riason
Prt. SW1/4 Sec. 6 T113N-R40W
Temporary Construction Easement 0.000 Acres
Topsoil Stockpile Easement 0.519 Acres
Permanent R.O.W. 0.346 Acres

STA. 239+70.02
N: 253254.609
E: 534705.220

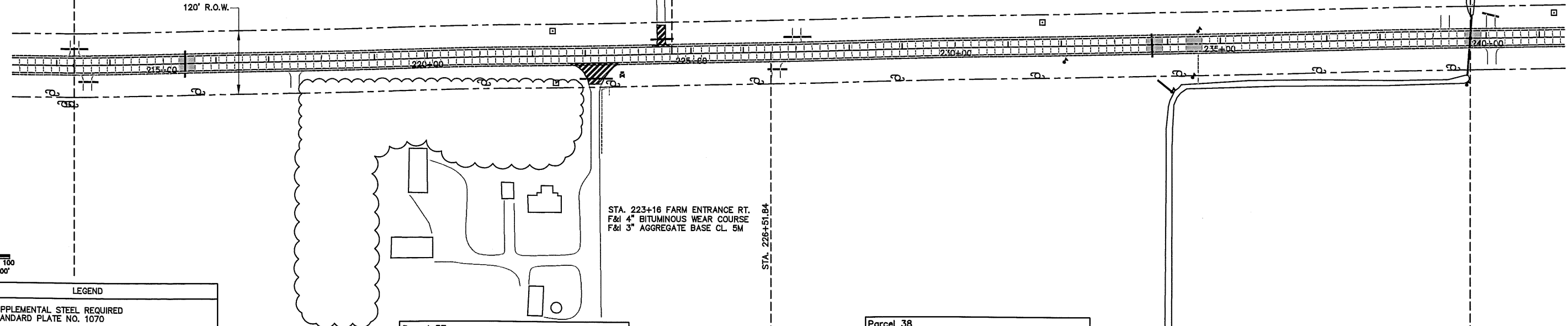
STA. 215+41 CENTERLINE
CONSTRUCT 30' REINFORCED PANEL

STA. 224+43 FARM ENTRANCE LT.
F&I 4" BITUMINOUS WEAR COURSE
F&I 3" AGGREGATE BASE CL. 5M

STA. 233+75 CENTERLINE
CONSTRUCT 30' REINFORCED PANEL

STA. 234+50 TILE CROSSING
CONSTRUCT 30' REINFORCED PANEL

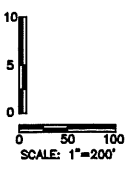
STA. 239+69 CENTERLINE
CONSTRUCT 30' REINFORCED PANEL



STA. 223+16 FARM ENTRANCE RT.
F&I 4" BITUMINOUS WEAR COURSE
F&I 3" AGGREGATE BASE CL. 5M

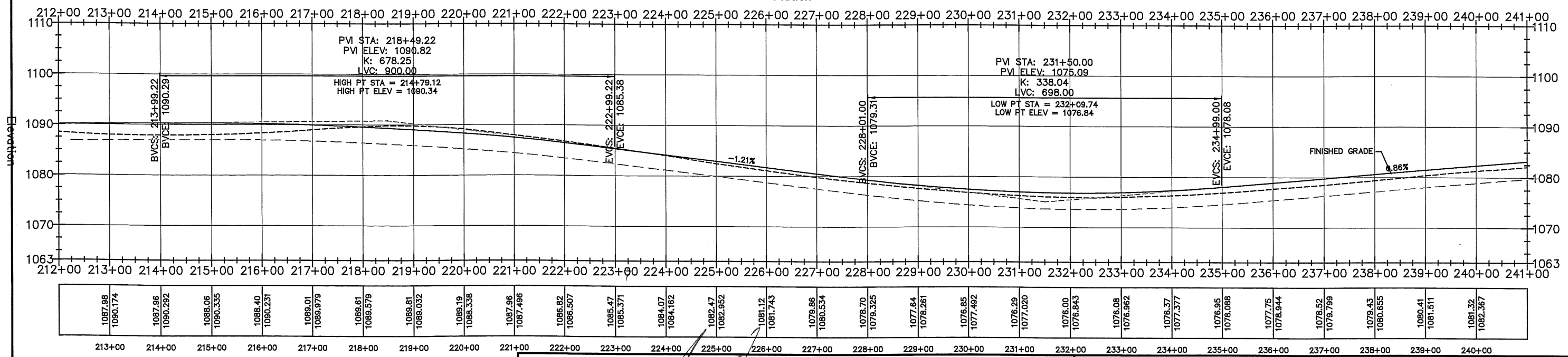
Parcel 37
Donald Charles Bot and Rosemary Bot
NW1/4NW1/4 SEC. 7 T113N-R40W
Temporary Construction Easement 0.000 Acres
Topsoil Stockpile Easement 0.248 Acres
Permanent R.O.W. 0.303 Acres

Parcel 38
Ruth Loe
NE1/4NW1/4 SEC. 7 T113N-R40W
Temporary Construction Easement 0.00 Acres
Topsoil Stockpile Easement 0.454 Acres
Permanent R.O.W. 0.303 Acres



LEGEND

	SUPPLEMENTAL STEEL REQUIRED STANDARD PLATE NO. 1070
	BITUMINOUS SURFACING
	7" CONC. PAVEMENT W/15' JOINT SPACING



1087.98	1087.96	1088.06	1088.40	1089.01	1089.61	1089.81	1089.96	1086.82	1085.47	1084.07	1082.47	1078.70	1077.64	1076.85	1076.29	1076.00	1076.08	1076.37	1076.95	1077.75	1078.52	1079.43	1080.41	1081.32			
1090.174	1090.292	1090.335	1090.231	1089.979	1089.579	1089.032	1088.338	1087.486	1086.507	1085.371	1084.162	1082.952	1081.743	1080.534	1079.325	1078.261	1077.492	1077.020	1076.843	1076.962	1077.377	1078.068	1078.944	1080.655	1082.367		
213+00	214+00	215+00	216+00	217+00	218+00	219+00	220+00	221+00	222+00	223+00	224+00	225+00	226+00	227+00	228+00	229+00	230+00	231+00	232+00	233+00	234+00	235+00	236+00	237+00	238+00	239+00	240+00

CERTIFIED BY: LIC. NO.: 50428 DATE: 1/16/13
 STATE PROJECT 042-610-034
 STATE PROJECT 042-070-003
 PLAN AND PROFILE
 SHEET 20 OF 25 SHEETS

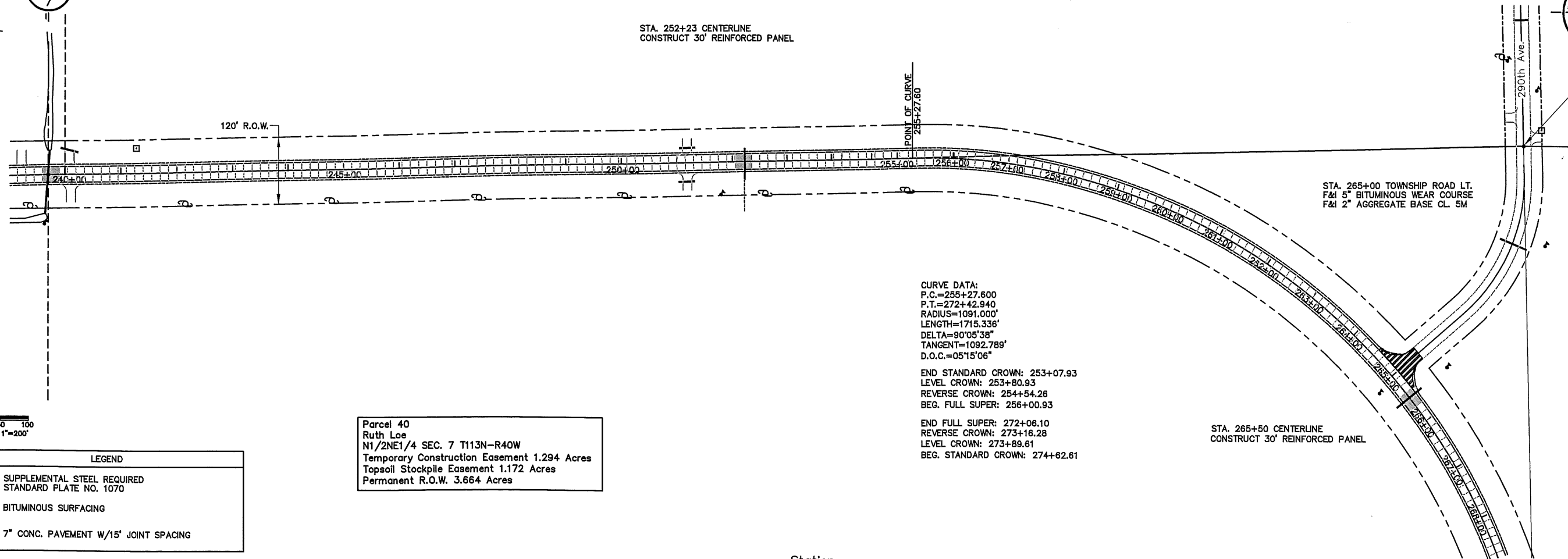
STA. 239+70.02

N: 253254.609
E: 534705.220

Parcel 39
Brian G. Gniffke and Shelly D. Gniffke
S1/2SE1/4 Sec. 6 T113N-R40W
Temporary Construction Easement 0.000 Acres
Topsoil Stockpile Easement 0.900 Acres
Permanent R.O.W. 0.381 Acres

N: 253313.979
E: 537354.739

STA. 252+23 CENTERLINE
CONSTRUCT 30' REINFORCED PANEL



CURVE DATA:
P.C.=255+27.600
P.T.=272+42.940
RADIUS=1091.000'
LENGTH=1715.336'
DELTA=90°05'38"
TANGENT=1092.789'
D.O.C.=05°15'06"

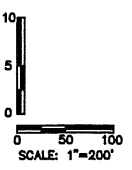
END STANDARD CROWN: 253+07.93
LEVEL CROWN: 253+80.93
REVERSE CROWN: 254+54.26
BEG. FULL SUPER: 256+00.93

END FULL SUPER: 272+06.10
REVERSE CROWN: 273+16.28
LEVEL CROWN: 273+89.61
BEG. STANDARD CROWN: 274+62.61

Parcel 40
Ruth Loe
N1/2NE1/4 SEC. 7 T113N-R40W
Temporary Construction Easement 1.294 Acres
Topsoil Stockpile Easement 1.172 Acres
Permanent R.O.W. 3.664 Acres

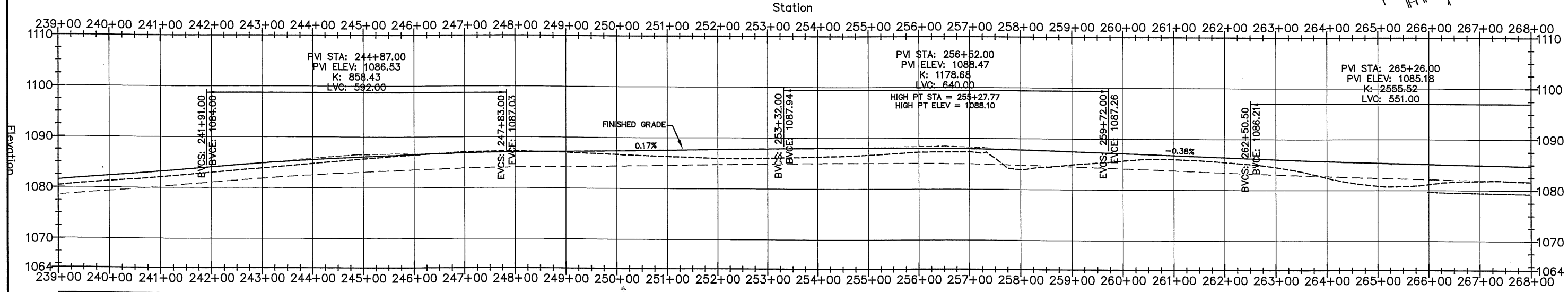
STA. 265+50 CENTERLINE
CONSTRUCT 30' REINFORCED PANEL

STA. 265+00 TOWNSHIP ROAD LT.
F&I 5" BITUMINOUS WEAR COURSE
F&I 2" AGGREGATE BASE CL 5M



LEGEND

	SUPPLEMENTAL STEEL REQUIRED STANDARD PLATE NO. 1070
	BITUMINOUS SURFACING
	7" CONC. PAVEMENT W/15' JOINT SPACING



1081.361	1082.11	1083.222	1083.02	1084.078	1083.86	1084.865	1084.79	1085.535	1085.70	1086.089	1086.45	1086.527	1087.06	1086.848	1087.22	1087.054	1087.05	1087.220	1086.70	1087.386	1086.32	1087.552	1085.97	1087.718	1086.05	1087.884	1088.31	1088.031	1086.68	1088.097	1087.29	1088.078	1087.35	1087.974	1083.96	1087.786	1084.94	1087.512	1085.72	1087.157	1086.02	1086.781	1085.47	1086.404	1084.51	1086.032	1082.43	1085.694	1080.85	1085.395	1081.19	1085.135	1081.84	1084.915
----------	---------	----------	---------	----------	---------	----------	---------	----------	---------	----------	---------	----------	---------	----------	---------	----------	---------	----------	---------	----------	---------	----------	---------	----------	---------	----------	---------	----------	---------	----------	---------	----------	---------	----------	---------	----------	---------	----------	---------	----------	---------	----------	---------	----------	---------	----------	---------	----------	---------	----------	---------	----------	---------	----------

CERTIFIED BY [Signature] LIC. NO.: 50428 DATE: 1/16/13
STATE PROJECT 042-610-034
STATE PROJECT 042-070-003
PLAN AND PROFILE
SHEET 21 OF 25 SHEETS

Parcel 41
 Melissa Loe
 Prt. NW1/4 Sec. 8 T113N-R40W
 Temporary Construction Easement 0.000 Acres
 Topsoil Stockpile Easement 0.000 Acres
 Permanent R.O.W. 0.00 Acres

Parcel 42
 Aamodt Family Trust
 Gerald Aamodt and Patricia Aamodt Trustees
 Prt. NW1/4 Sec. 8 T113N-R40W
 Temporary Construction Easement 1.017 Acres
 Topsoil Stockpile Easement 0.716 Acres
 Permanent R.O.W. 3.480 Acres

WARNING
 HIGH PRESSURE PIPELINE
 EXCAVATION AND/OR CONSTRUCTION IS PROHIBITED WITHOUT
 COMPLIANCE WITH STATE ONE-CALL, AND WITHOUT
 WRITTEN PERMISSION FROM MAGELLAN PIPELINE COMPANY

STA. 271+85 FARM ENTRANCE LT.
 F&I 4" BITUMINOUS WEAR COURSE
 F&I 3" AGGREGATE BASE CL. 5M

STA. 284+50 COUNTY ROAD 73 RT.
 F&I 5" BITUMINOUS WEAR COURSE
 F&I 2" AGGREGATE BASE CL. 5M

100' MAGELLAN EASEMENT TRACT

STA. 273+77 CENTERLINE
 CONSTRUCT 30' REINFORCED PANEL

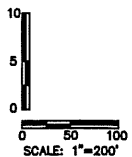
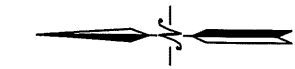
Parcel 52
 Donald Charles Bot and Rosemary Bot
 S1/2N1/2 SEC. 7 T113N-R40W
 Temporary Construction Easement 0.000 Acres
 Topsoil Stockpile Easement 0.405 Acres
 Permanent R.O.W. 0.134 Acres

CURVE DATA:
 P.C.=277+28.570
 P.T.=294+18.670
 RADIUS=1091.000
 LENGTH=1690.095
 DELTA=88°45'30"
 TANGENT=1067.609
 D.O.C.=05°15'06"

END STANDARD CROWN: 275+08.90
 LEVEL CROWN: 275+81.90
 REVERSE CROWN: 276+55.23
 BEG. FULL SUPER: 278+01.90

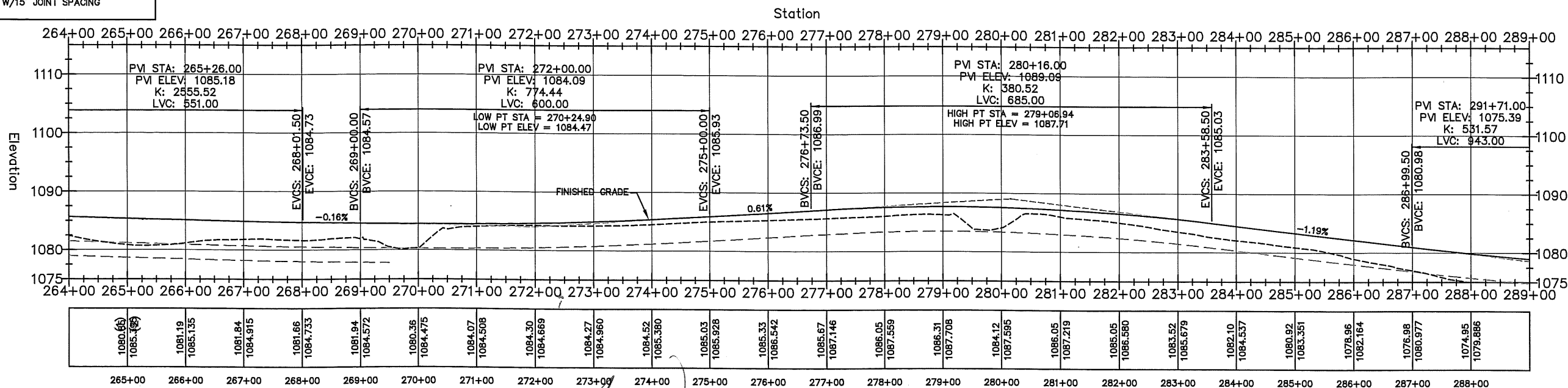
END FULL SUPER: 293+45.34
 REVERSE CROWN: 294+92.01
 LEVEL CROWN: 295+65.34
 BEG. STANDARD CROWN: 296+38.34

7
 8
 N: 250668.719
 E: 537410.139



LEGEND

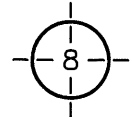
	SUPPLEMENTAL STEEL REQUIRED STANDARD PLATE NO. 1070
	BITUMINOUS SURFACING
	7" CONC. PAVEMENT W/15' JOINT SPACING



CERTIFIED BY *[Signature]* LIC. NO.: 50428 DATE: 1/16/13
 LICENSED PROFESSIONAL ENGINEER
 STATE PROJECT 042-610-034
 STATE PROJECT 042-070-003
 PLAN AND PROFILE
 SHEET 22 OF 25 SHEETS

Parcel 43
 Melissa Loe
 Prt. NW1/4 Sec. 8 T113N-R40W
 Temporary Construction Easement 0.000 Acres
 Topsoil Stockpile Easement 0.347 Acres
 Permanent R.O.W. 0.231 Acres

STA. 310+51.24
 N: 250666.7430
 E: 540110.3190



Parcel 44
 English Lutheran Church
 Prt. NW1/4 Sec. 8 T113N-R40W
 Temporary Construction Easement 0.000 Acres
 Topsoil Stockpile Easement 0.000 Acres
 Permanent R.O.W. 0.000 Acres

STA. 308+01 CENTERLINE & TILE CROSSING
 CONSTRUCT 30' REINFORCED PANEL

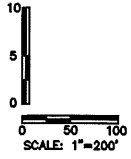
Parcel 45
 Ronald Timmerman
 N1/2SW1/4 Sec. 8 T113N-R40W
 Temporary Construction Easement 0.00 Acres
 Topsoil Stockpile Easement 0.918 Acres
 Permanent R.O.W. 0.398 Acres

STA. 292+50 TILE CROSSING
 CONSTRUCT 30' REINFORCED PANEL

STA. 271+85 CEMETARY ENTRANCE LT.
 F&I 4" BITUMINOUS WEAR COURSE
 F&I 3" AGGREGATE BASE CL. 5M

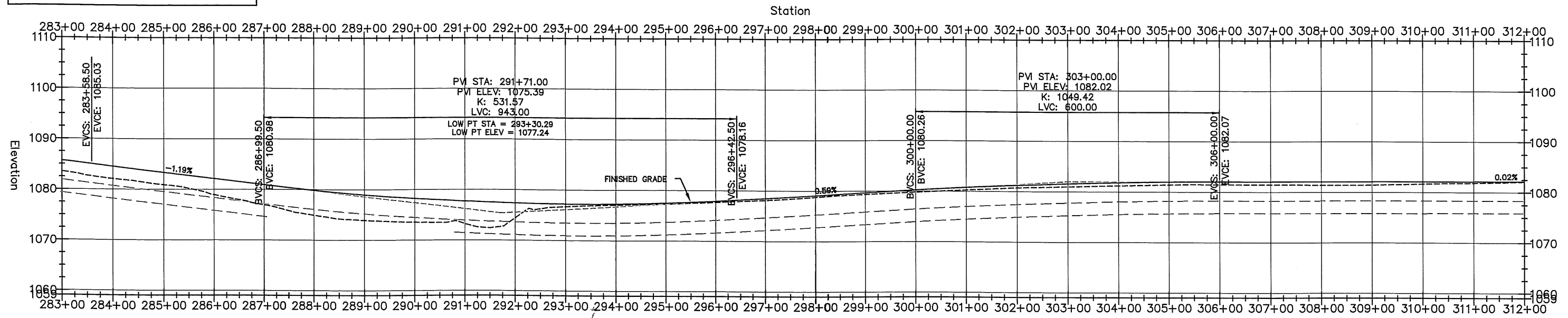
STA. 288+00 CENTERLINE
 CONSTRUCT 30' REINFORCED PANEL

STA. 291+73 TILE CROSSING
 CONSTRUCT 30' REINFORCED PANEL



SCALE: 1"=200'

LEGEND	
	SUPPLEMENTAL STEEL REQUIRED STANDARD PLATE NO. 1070
	BITUMINOUS SURFACING
	7" CONC. PAVEMENT W/15' JOINT SPACING



1082.10	1084.537	1080.92	1083.351	1078.96	1082.184	1076.98	1080.977	1074.95	1078.886	1073.95	1078.982	1073.55	1078.287	1073.27	1077.739	1074.44	1077.400	1076.72	1077.249	1077.09	1077.286	1077.31	1077.511	1077.71	1077.925	1078.16	1078.495	1078.80	1078.082	1079.37	1079.670	1079.83	1080.257	1080.28	1080.797	1080.76	1081.241	1081.01	1081.590	1081.23	1081.844	1081.44	1082.003	1081.51	1082.066	1081.51	1082.081	1081.43	1082.097	1081.47	1082.113	1081.70	1082.128	1081.87	1082.144
284+00	285+00	286+00	287+00	288+00	289+00	290+00	291+00	292+00	293+00	294+00	295+00	296+00	297+00	298+00	299+00	300+00	301+00	302+00	303+00	304+00	305+00	306+00	307+00	308+00	309+00	310+00	311+00																												

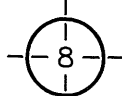
PLAN AND PROFILE

CERTIFIED BY *[Signature]* LIC. NO.: 50428 DATE: 1/16/13

STATE PROJECT 042-610-034
 STATE PROJECT 042-070-003

SHEET 23 OF 25 SHEETS

STA. 310+51.24
N: 250666.7430
E: 540110.3190



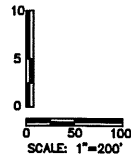
Parcel 46
Cottonwood Country Club, Inc.
Prt. NW1/4 Sec. 8 T113N-R40W
Temporary Construction Easement 0.00 Acres
Topsoil Stockpile Easement 0.000 Acres
Permanent R.O.W. 0.619 Acres

STA. 327+66 CENTERLINE AND TILE CROSSING
CONSTRUCT 45' REINFORCED PANEL

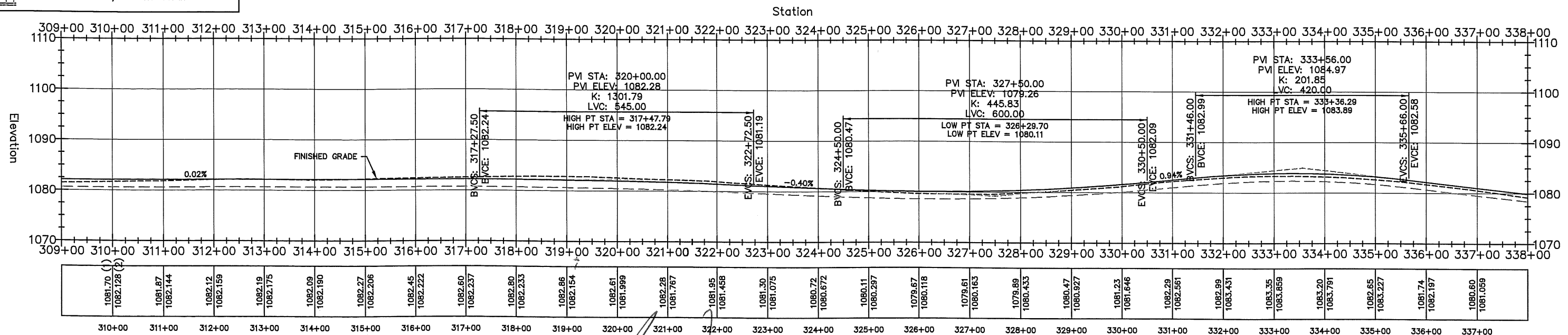
STA. 337+37 FARM ENTRANCE RT.
F&I 4" BITUMINOUS WEAR COURSE
F&I 3" AGGREGATE BASE CL. 5M

Parcel 48
Jonathan Brower and Danielle Brower
Prt. NE1/4SE1/4 Sec. 8 T113N-R40W
Temporary Construction Easement 0.00 Acres
Topsoil Stockpile Easement 0.000 Acres
Permanent R.O.W. 0.046 Acres

Parcel 47
Eileen F. Andersen Jaspersen Revocable Trust
Eileen F. Anderson Jaspersen (Trustee)
Prt. SE1/4 Sec. 8 T113N-R40W
Temporary Slope Easement 0.00 Acres
Topsoil Stockpile Easement 0.861 Acres
Permanent R.O.W. 0.574 Acres



LEGEND	
	SUPPLEMENTAL STEEL REQUIRED STANDARD PLATE NO. 1070
	BITUMINOUS SURFACING
	7" CONC. PAVEMENT W/15' JOINT SPACING



PLAN AND PROFILE

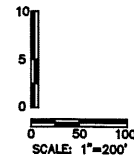
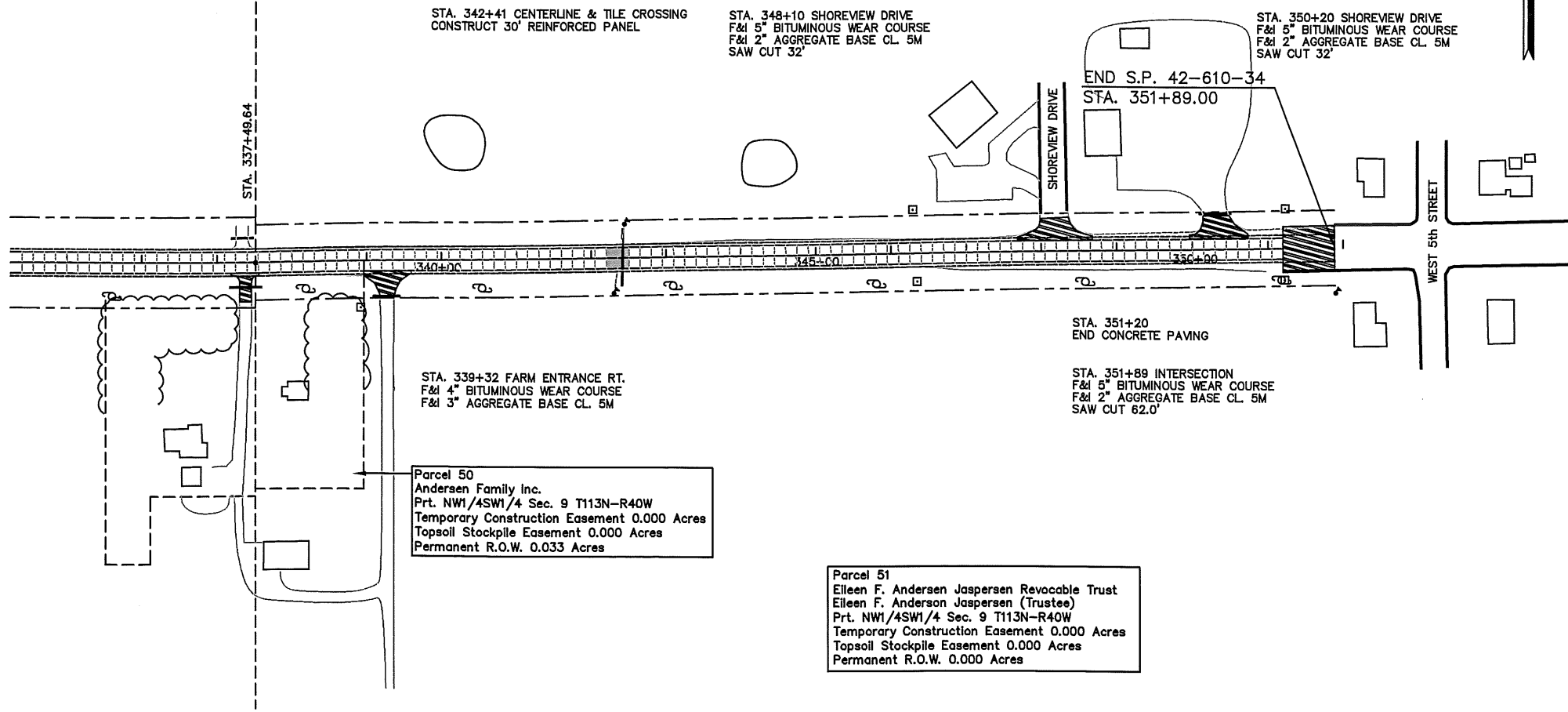
CERTIFIED BY LIC. NO.: 50428 DATE: 1/16/13

LICENSED PROFESSIONAL ENGINEER

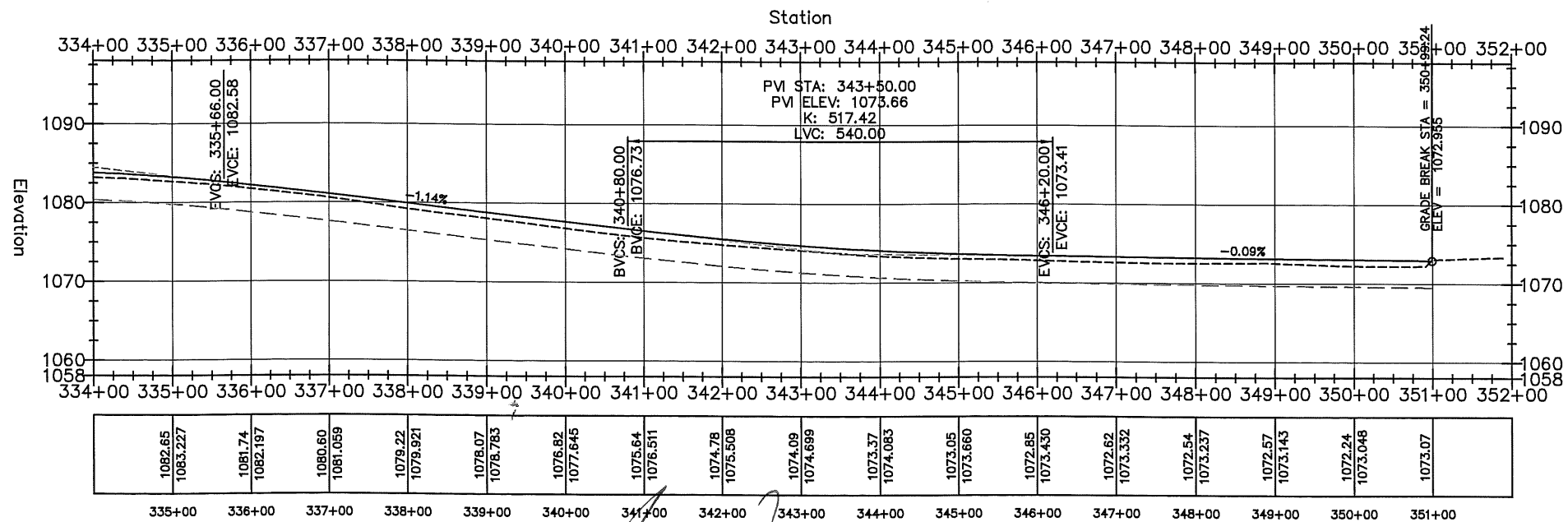
STATE PROJECT 042-610-034
STATE PROJECT 042-070-003

SHEET 24 OF 25 SHEETS

Parcel 49
 Cottonwood Country Club, Inc.
 Prt. Government Lot (1) Sec. 9 T113N-R40W
 Temporary Construction Easement 0.000 Acres
 Topsoil Stockpile Easement 0.000 Acres
 Permanent R.O.W. 0.000 Acres



LEGEND	
	SUPPLEMENTAL STEEL REQUIRED STANDARD PLATE NO. 1070
	BITUMINOUS SURFACING
	7\"/>



CERTIFIED BY *[Signature]* LIC. NO.: 50428 DATE: 1/16/13
 LICENSED PROFESSIONAL ENGINEER

PLAN AND PROFILE
 STATE PROJECT 042-610-034
 STATE PROJECT 042-070-003
 SHEET 25 OF 25 SHEETS